

To: HONORABLE MAYOR AND CITY COUNCIL.

FROM: Dave Maroney, Director of Economic Development and Planning.

SUBJECT: *Encroachment Agreement for Tilion Brewing Company, LLC*

DATE: October 12, 2016.

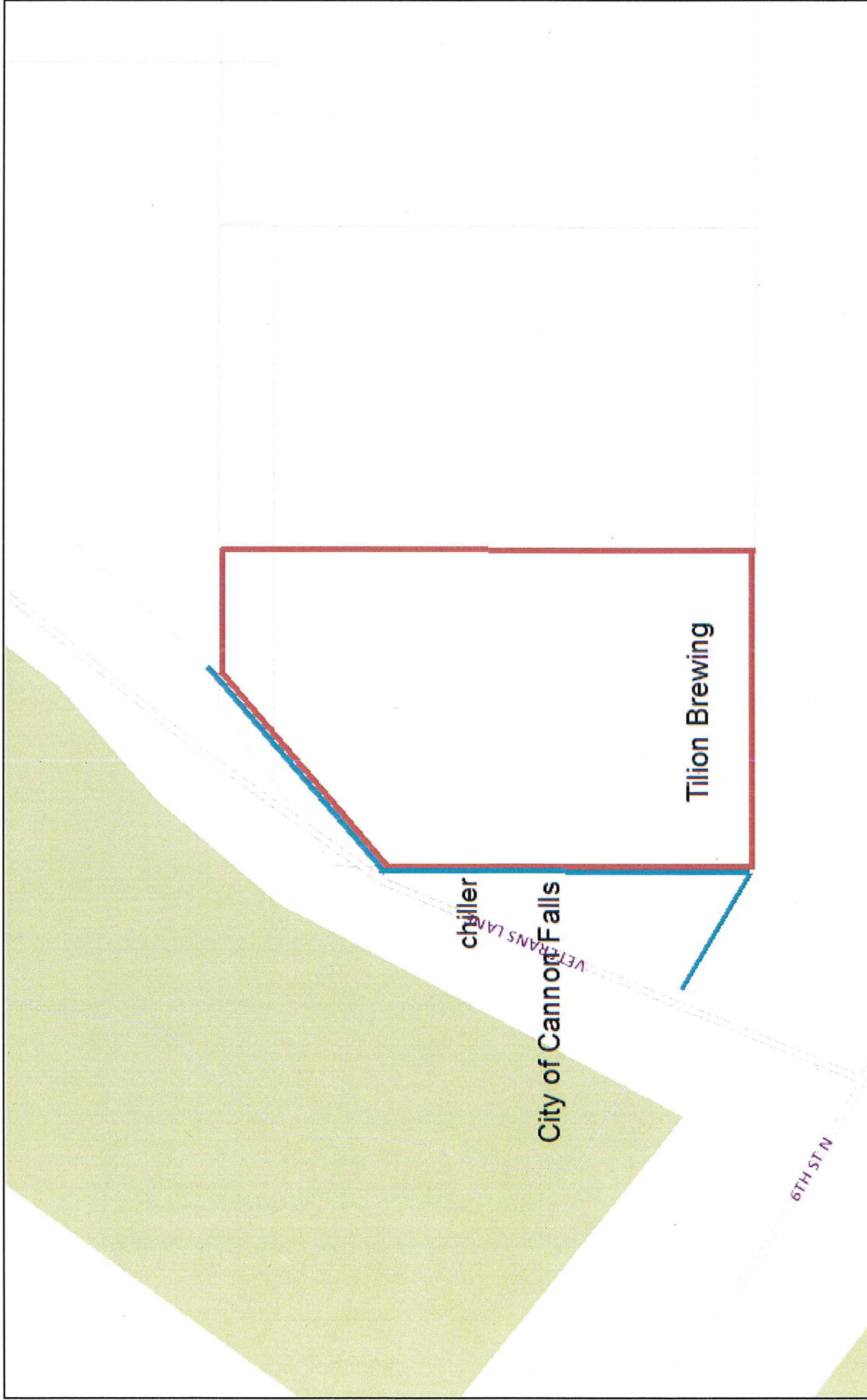
BACKGROUND.

Tilion Brewing Company, LLC is seeking approval to place a piece of brewing equipment on land immediately west of the Brewery that is owned by the City of Cannon Falls – *see enclosures.*

REQUESTED COUNCIL ACTION.

The City Council is asked to approve the accompanying Resolution that authorizes the City Attorney to prepare an Encroachment Agreement to allow placement of the equipment on City-owned land.

Encroachment Request (10/18/16)



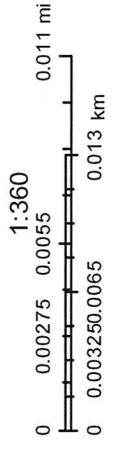
October 12, 2016

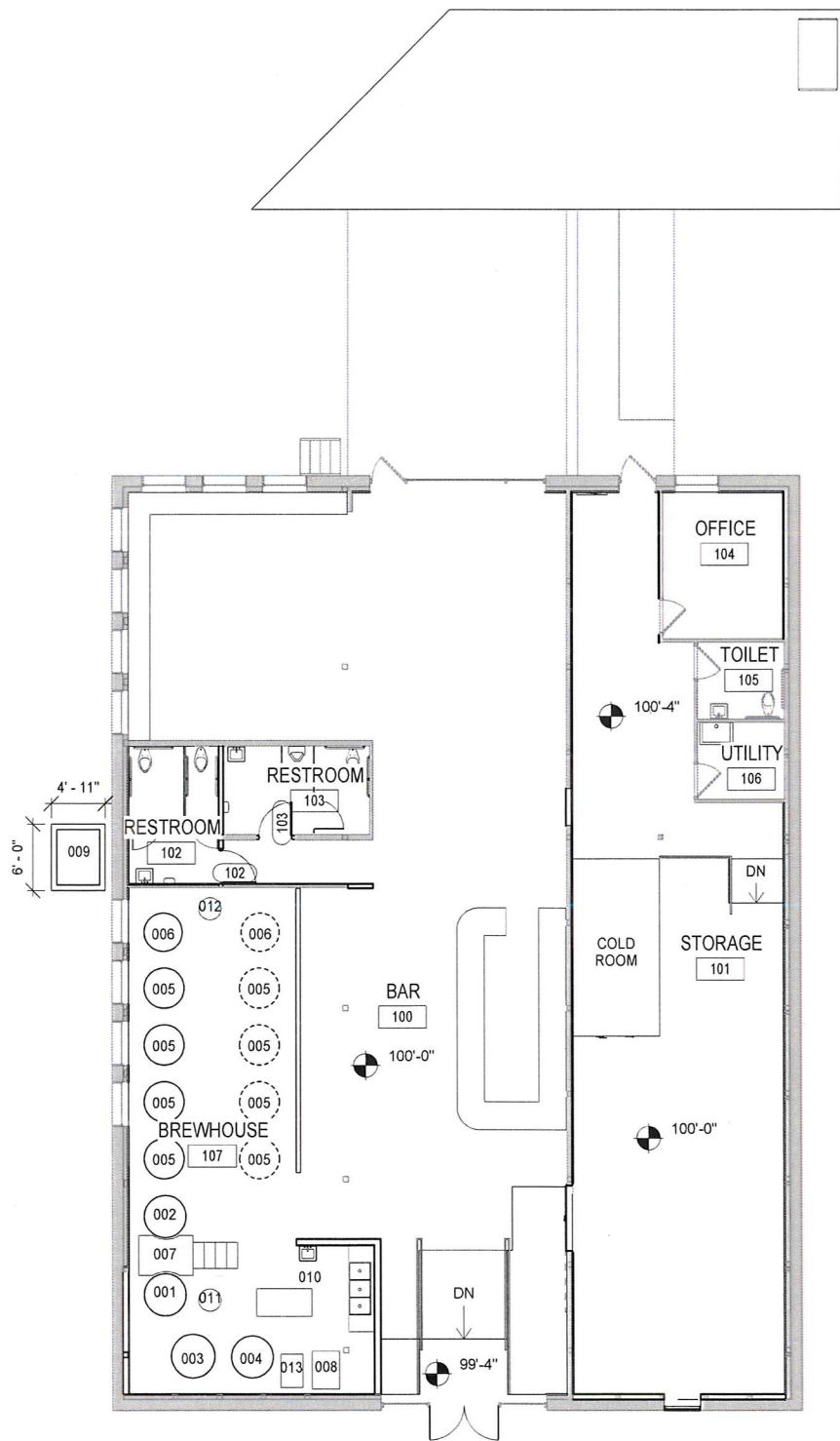
Roads 9.600

Township or Other Roads

Roads 300

Township or Other Roads





1 FLOOR PLAN
 3/32" = 1'-0"



TILION BREWING COMPANY
 3/32" = 1'-0"
 11x17 PORTRAIT

Proj. No.:	491401
Date:	09/21/16
Ref. DWG.:	
Sheet No.:	A351

MA SERIES CHILLER SYSTEM

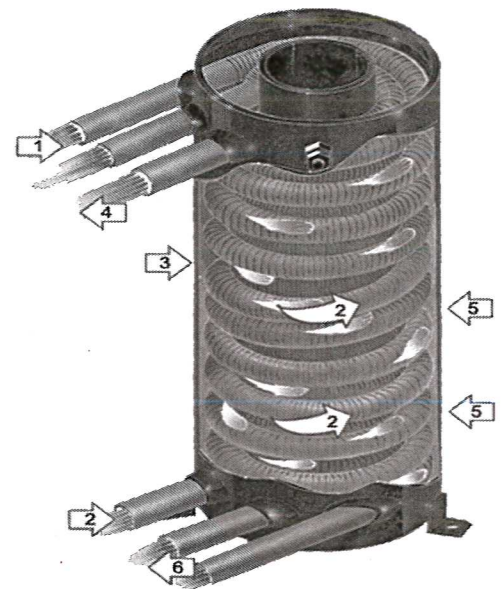


Packaged Chiller System

The MA Series is designed for new applications and the retrofit market.

Utilizing proven, efficient, core components we offer a system with Glycol/Water Storage Tank and dedicated Glycol/Water Process Pump to circulate to the processing plant.

- Complete Size Range- The MA Series is offered in various sizes from 5 HP to 24 HP in single and dual compressor configurations.
- Spiral Drum Heat Exchanger- Each model is supplied standard with the proven Spiral Drum Heat Exchanger. Combining the highest efficiency with unmatched durability. The Spiral Drum Evaporator is supplied with a 5 year replacement warranty
- Stainless Steel Glycol Pumps- System supplied standard with an internal Chiller Evaporator Pump and a Dedicated Glycol Process Pump.
- Insulated Glycol Storage Tank- System supplied standard with large insulated Glycol Storage Tank with easy fill access.
- ETL Listed UL 508 Electrical Control Panel- Control panels supplied with all motor starters, system fusing, indicator light, and digital thermostat with glycol temperature display.



When Keeping Cool is Everything™
Manufacturers and Suppliers of the Pro Chiller and Proformer Product Line.

Pro Refrigeration Inc.
Tel: 253.735.9466 / 800.845.7781

P.O. Box 1528
Fax: 253.735.2631

Auburn, WA 98071-1528
www.proformerproducts.com

**CITY OF CANNON FALLS
GOODHUE COUNTY, MINNESOTA**

RESOLUTION NUMBER 2226

**RESOLUTION AUTHORIZING PREPARATION OF ENCROACHMENT
AGREEMENT**

WHEREAS, Tilion Brewing Company, LLC has requested permission to place a piece of brewing equipment on land owned by the City of Cannon Falls; and

WHEREAS, an Encroachment Agreement that specifies terms and conditions that will apply to placement of the equipment on City-owned property is needed to approve the request.

NOW THEREFORE, BE IT RESOLVED BY THE CITY COUNCIL OF CANNON FALLS, GOODHUE COUNTY, MINNESOTA, that the City Attorney is hereby authorized to prepare the Encroachment Agreement with costs incurred for professional services and expenses to be paid by Tilion Brewing Company, LLC.

Adopted by the City Council of Cannon Falls this 18th day of October, 2016.

City of Cannon Falls

Lyman M. Robinson, Mayor

Attest: _____
Ronald S. Johnson, City Administrator