

Working together for Mobility & Safety



2017
Priority Projects
in Goodhue
County



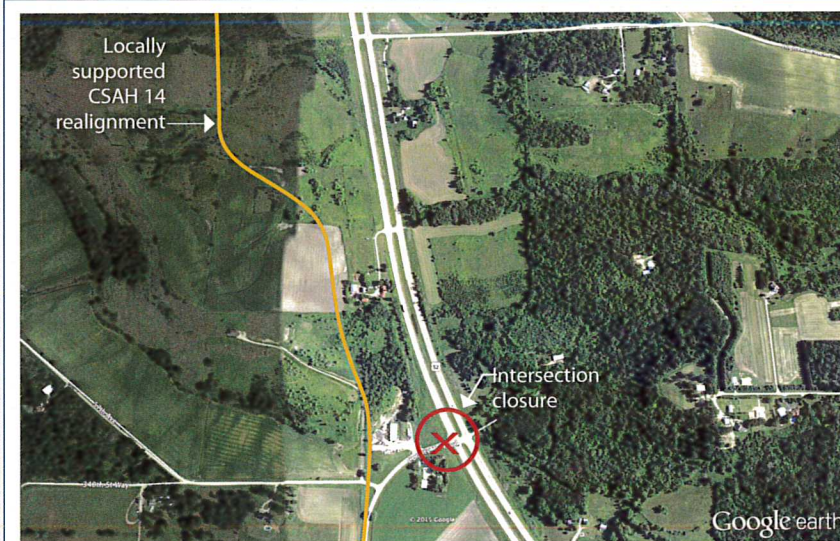
2017 Priority Projects

The Highway 52 Freeway Partnership is closing in on its overall goal of achieving a modern freeway for the Highway 52 corridor, which covers 80 miles from the Twin Cities to Rochester. Over the last 16 years, the Highway 52 Partnership has succeeded in securing funding to convert 60 miles of this corridor of commerce to freeway.

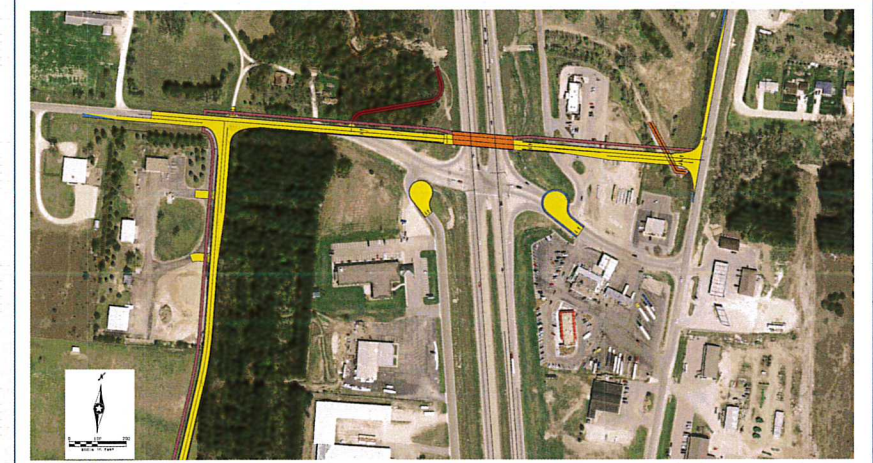
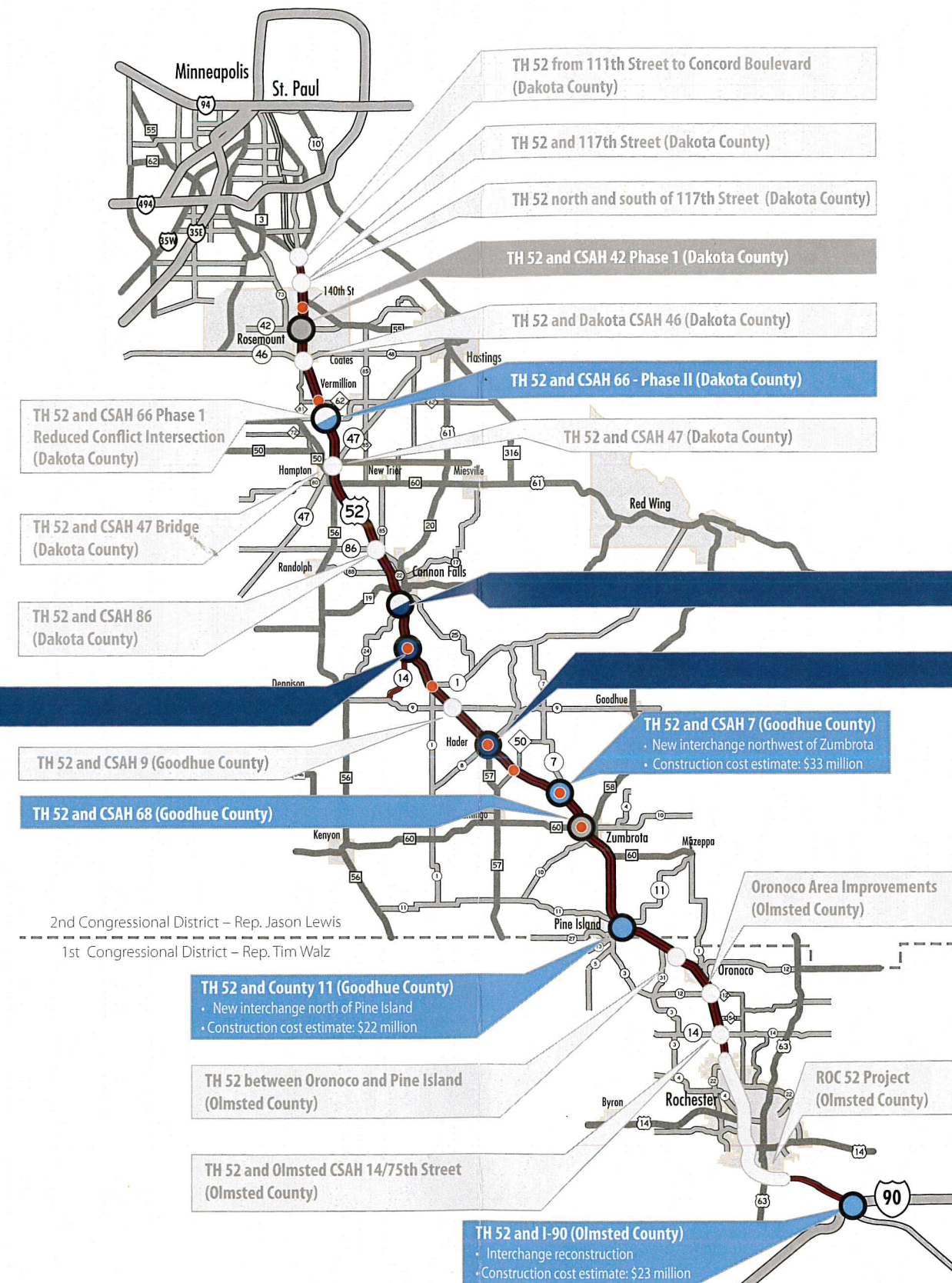
The three priority projects highlighted in dark blue will help address safety, mobility and freight needs. Examples include:

- The TH 52 and TH 57/CSAH 8 intersection has a crash rate 2.3 times higher than similar intersections statewide.
- In 2015, a pedestrian fatality occurred in the TH 52 and CSAH 24 Phase II project area and there is no emergency response redundancy if the roundabouts are closed.
- Ten percent of daily vehicles traveling along Highway 52 in Goodhue County are classified as heavy commercial.

TH 52 and CSAH 14 Realignment/Access Closure (Goodhue County)



Construction Cost Estimate: \$3 million (Total Cost: \$3.8 million)
Funding to Date: \$0
Lead Agency: Goodhue County



Construction Cost Estimate: \$5.9 million (Total Cost: \$7.5 million)
Funding to Date: \$0
Lead Agency: MnDOT

TH 52 and CSAH 24 Overpass – Phase II (Goodhue County)

TH 52 and TH 57/CSAH 8 Interchange (Goodhue County)



Construction Cost Estimate: \$10 million (Total Cost: \$16.5 million)
Funding to Date: \$0
Lead Agency: MnDOT



The Highway 52 Freeway Partnership

is a collaboration between Dakota, Goodhue, and Olmsted Counties, in association with MnDOT, that advocates upgrading Highway 52 to a freeway design.

We are pleased to report that progress continues to be made

in achieving the vision of a modern Highway 52 freeway facility between Rochester and the Twin Cities. **Over the last decade, 12 interchanges and five over/underpasses have been completed or are underway, in addition to the ROC 52 freeway project through Rochester;** however, we still have a long way to go to make our vision a reality for the travelers and businesses who rely on this important interregional corridor of commerce to get their goods to market and their employees to work.

Closing the Financial Gap

Our three priority projects in Goodhue County are estimated at \$30 million. These priority projects provide the highest benefit by achieving ten more miles of freeway. In addition to these needs, the Highway 52 Partnership is seeking your support to help address funding shortfalls that limit our ability to achieve a freeway design from Rochester to the Twin Cities. Examples include:

- No state funding to help projects advance through the planning and design phase.
- Limited safety funds to address the corridor safety needs, which has equated in a total loss of \$122.2 million in crashes over the last five years (2011-2015). High crash locations are identified on the map.
- Counties and cities have directly contributed or secured non-traditional funding for more than 25 percent of the improvements along the corridor – going well beyond their local responsibility for a state highway.
- State and federal funding at current levels will not be sufficient to resolve the corridor's existing system preservation issues.
- Urgent system mobility and safety improvements are needed to promote economic development initiatives between the Twins Cities and Rochester.

Importance of Increasing Transportation Funds

Transportation infrastructure grows economic activity by connecting people, businesses, and resources. Government, at all levels, has a responsibility to ensure that safe and adequate roads, bridges, and other transportation infrastructure are available to the public and businesses that rely on the transportation system.

Unless investment levels are increased, the condition of state highways, such as Highway 52, will continue to decline.



"Together, we can accomplish great things."

The Highway 52 Freeway Partnership looks forward to our continued work with you!

For more information on the Highway 52 Freeway Partnership, please contact:

Olmsted County
Mike Sheehan, PE
(507) 328-7070

Goodhue County
Greg Isakson, PE
(651) 385-3025

Dakota County
Mark Krebsbach, PE
(952) 891-7102