

TO: MAYOR AND CITY COUNCIL
FROM: NEIL JENSEN, City Administrator
SUBJECT: Bituminous Cracksealing Proposal
MEETING DATE: July 21, 2020

BACKGROUND:

Pavement Resources out of Ham Lake has provided the City with a quote to do cracksealing and spray patching. Please find attached the areas that will be scheduled for cracksealing if approved. The total cost for these two areas is \$14,900.00. Cracksealing is vital to keep roads that are still in good shape from deteriorating further.

STAFF RECOMMENDATION

It is our recommendation to approve the cracksealing quote from Pavement Resources for the cost of \$14,900.00.

REQUESTED COUNCIL ACTION

Please make a motion to approve the cracksealing quote from Pavement Resources in the amount of \$14,900.00.

13535 Johnson St NE
 Ham Lake, MN 55304
 +1 7634342828
 info@pavementresources.
 com
 https://pavementresources
 .com/



Proposal

ADDRESS

Tony Haan
 City of Cannon Falls
 918 River Road
 Cannon Falls, MN 55009

PROPOSAL # 4380

DATE 07/01/2020

EXPIRATION DATE 07/29/2020

SALES REP

Jeff

DATE	ACTIVITY	QTY	UNIT PRICE	AMOUNT
	Service:Pavement Repair:Spray Inject Patching Repair potholes, cracks wider than 1", alligator-cracked areas, and delaminated areas marked in pavement using the Spray Inject Method. The Spray Inject Method cleans the area, applies a tack coat, sprays the emulsion and aggregate mix into the pothole with sufficient force to compact the material as it is applied, and then follows with dry aggregate to prevent tracking. Each day consists of 8 hours on site or one load of aggregate (approx 7 tons), whichever comes first.	1	3,500.00	3,500.00
	Service:Pavement Repair:Cracksealing-Blow and Seal Timber Lane Development-Cracksealing-NTE 9,300 LF Blow out cracks 1/4" up to 3/4", except in alligatored areas. Seal cracks with MN-DOT spec #3723 hot pour rubberized crackfiller. Apply barrier tissue as needed. Some settling of material will occur after cooling.	1	6,850.00	6,850.00
	Service:Pavement Repair:Cracksealing-Blow and Seal Cedar Hills Development-Cracksealing-NTE 5,450 LF Blow out cracks 1/4" up to 1", except in alligatored areas. Seal cracks with MN-DOT spec #3723 hot pour rubberized crackfiller.	1	4,550.00	4,550.00

DATE	ACTIVITY	QTY	UNIT PRICE	AMOUNT
------	----------	-----	------------	--------

Apply barrier tissue as needed.
Some settling of material will occur after cooling.

NOTE: Includes mechanically removing vegetation in cracks using a Billy Goat Grazor with a wire brush wheel.

ACCEPTANCE OF PROPOSAL

TOTAL

\$14,900.00

The above prices, specifications and conditions are satisfactory and hereby accepted. Pavement Resources, Inc. is authorized to do the work as specified.

DISCLAIMER:

Pavement Resources, Inc. is NOT RESPONSIBLE for work on any areas that are obstructed due to vehicles or other objects, or not otherwise accessible while work is being performed. Blocked or otherwise obstructed areas are subject to return trip scheduling and fees.

A minimum 25% of the total is due within 5 business days of accepting the job. BALANCE DUE NET 10 DAYS UPON COMPLETION OF WORK.

Upon acceptance of quotation and terms, PLEASE SIGN, date and RETURN. Thank you!

By: _____ Date: _____

Accepted By

Accepted Date

837 4TH ST S
527190800

527200770

527191000

527350720

527350730

527350740

527350710

527200580

CEDAR HILLS DR

527200500

527200510

527400040

527400010

527200430

527200760

527200560

527200070

527200761

527200370

527200380

527200390

527200080

925 4TH ST S
527200740

527200090

527200360

527200350

527200340

31271 68TH AVENUE WAY

527200730

527200100

527200680

935 4TH ST S
527200720

527200111

6555 SPRUCE DR

527200350

527200340

527200330

527200710

527200130

527200320

527200200

527200140

527200310

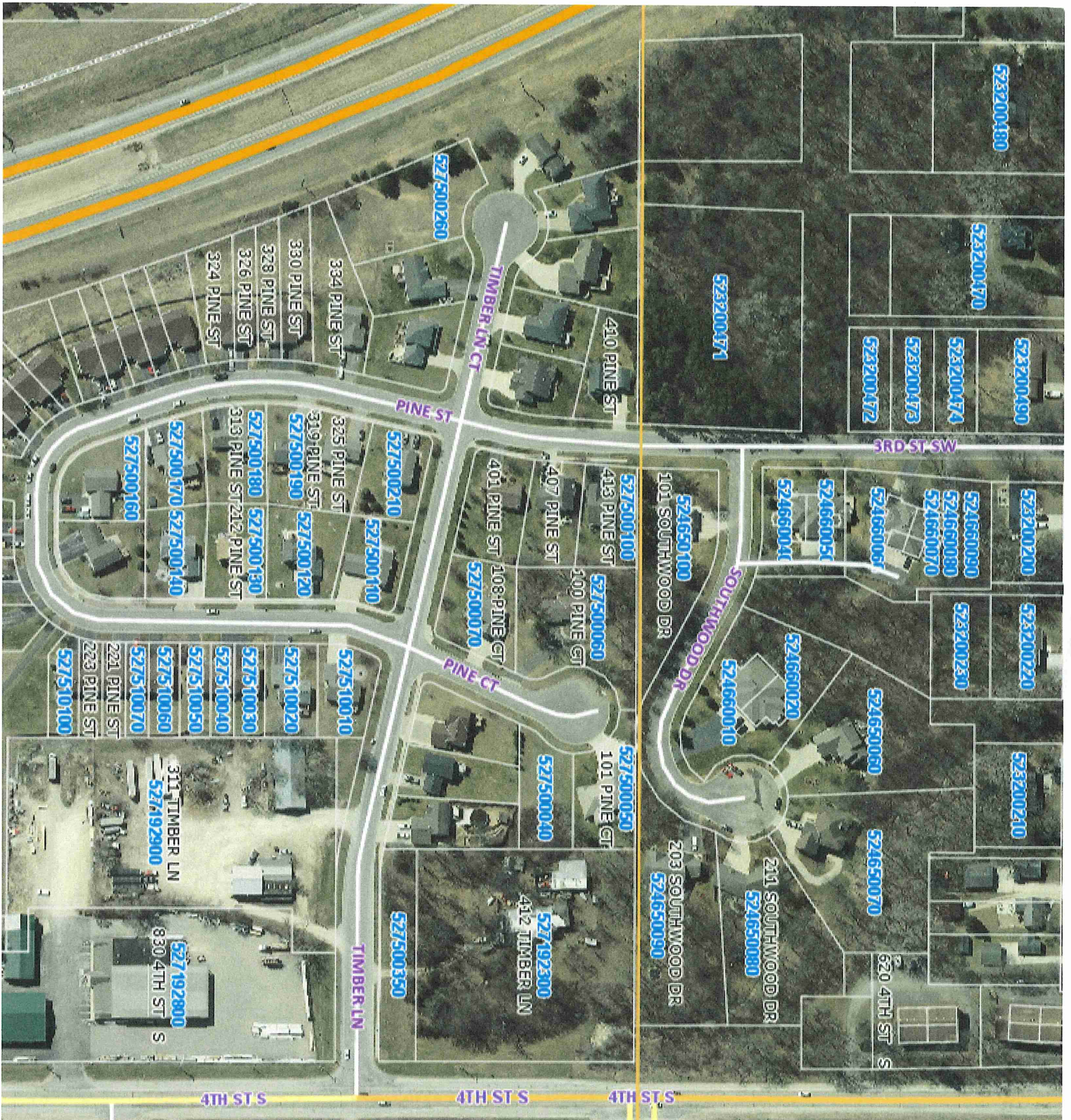
SPRUCE DR

HEMLOCK DR

BLUFF

5

30



523200180

523200170

523200490

523200474

523200473

523200472

523200471

523200200

524660090

524660080

524660070

524660061

524660051

524660041

523200220

523200230

523200210

524650060

524660020

524660010

524650070

211 SOUTHWOOD DR

524650080

620 4TH ST S

524650100

101 SOUTHWOOD DR

203 SOUTHWOOD DR

524650090

527500100

413 PINE ST

407 PINE ST

527500060

100 PINE CT

108 PINE CT

527500050

101 PINE CT

527500040

527192300

412 TIMBER LN

527500260

TIMBER LN CT

410 PINE ST

PINE ST

334 PINE ST

328 PINE ST

326 PINE ST

324 PINE ST

527500210

325 PINE ST

319 PINE ST

527500180

527500190

527500130

527500140

527500110

313 PINE ST

212 PINE ST

527500160

527500170

527500140

527510010

221 PINE ST

223 PINE ST

527510020

527510030

527510040

527510050

527510060

527510070

527500350

TIMBER LN

311 TIMBER LN

527192900

830 4TH ST S

4TH ST S

4TH ST S

4TH ST S

527192800