

PROPOSAL FOR PROFESSIONAL SERVICES

City Engineering Services

CITY OF CANNON FALLS, MINNESOTA | JULY 1, 2020



Building a Better World
for All of Us®

Engineers | Architects | Planners | Scientists

July 1, 2020

City of Cannon Falls
Attn: Neil Jensen, City Administrator
918 River Road
Cannon Falls, MN 55009



Building a Better World
for All of Us®

RE: Proposal for Professional Services | City Engineering Services

Dear Mr. Jensen and Members of the Selection Committee,

For nearly two decades, SEH and Greg Anderson have worked side by side with the City of Cannon Falls on a variety of important projects. This started with the 2001 Utility Extension Project into the “annexation area” that included the Cedar Hills Neighborhood and the highway commercial area along Hwy 52.

Although SEH knows the City of Cannon Falls inside and out – your staff, your community and your public infrastructure system – we don’t take that longstanding relationship for granted. We believe, however, that by building on that history with the City, SEH can provide the greatest return on the City of Cannon Falls’ City Engineering investment compared to other firms.

COST-EFFECTIVE IMPLEMENTATION OF THE CITY’S CAPITAL IMPROVEMENT PLAN (CIP)

SEH prepared the City’s current street and utility CIP in 2009 and successfully led the design and construction of the first four of the proposed six projects in the CIP. SEH is uniquely positioned to assist the City with the completion of the remaining projects: Northside 1 and Northside 2. Greg not only prepared the CIP, but has also worked on the design and oversaw the construction of the four projects completed to date (the 2011, 2013, 2016 and 2018 Street Improvement Projects).

PROVEN EXTENSION OF CITY STAFF AND COMMUNITY RESOURCE

With recent turnover in leadership at the City, stability will be a key attribute for your city engineer moving forward. We have dedicated Greg as your city engineer, a role he has successfully performed since 2006. Greg’s investment in the Cannon Falls community will continue to be reflected in how he facilitates City projects moving forward. Due to familiarity and strong working relationships that have been established, Greg efficiently operates as an extension of city staff.

Whether it’s a question on sidewalk construction, site review questions for the new Cannonbelle’s Cheese Facility, or utility staff questions on sewer main and service locations from the 2001 Utility Extension Project, Greg quickly has the answer. Just ask your current and past staff how the service has been from Greg and SEH. We look forward to continuing to serve as an extension of your staff in this way.

ADVOCATE FOR THE CITY WITH OUTSIDE FUNDING AGENCIES

SEH has assisted the City of Cannon Falls in securing outside funding for many important past City projects, as well as two current projects, and is uniquely positioned to see these projects through implementation for the City. These projects include:

- DNR Trail Grant for the connection of the Cannon Valley Trail to the Mill Towns Trail through Hannah’s Bend Park
- Cannon River Sewer Bridge Replacement Project – SEH assisted the City in getting this project placed on the Public Facilities Authority’s (PFA) Project Priority List with a score of 68, ranking 31st, well in the fundable range should the City decide to move this project forward in 2021. This project would remove the current sewer bridge that hangs over the Cannon River just downstream of the 3rd Street Bridge with a lift station and force main buried under the river bed. The preliminary design for this project was funded via a Flood Damage Prevention Grant in 2009 from the DNR.

TITLE PAGE

CITY ENGINEERING SERVICES | CITY OF CANNON FALLS

SHORT ELLIOTT HENDRICKSON INC.

MAIN POINT OF CONTACT

Greg Anderson, PE

Project Manager
3535 Vadnais Center Drive
St. Paul, MN 55110
651.490.2172
ganderson@sehinc.com

LEADERSHIP AND EFFECTIVE COMMUNICATIONS

Greg has been working on projects for the City of Cannon Falls since late 2000 (the design of the 2001 Utility Extension Project). He has played a role in nearly every infrastructure project the City has completed since that time. Greg's institutional knowledge of the City's infrastructure system cannot be matched by any other engineer.

Through several changes in city hall and public works staff, as well as elected officials, Greg has continued to deliver, backed by a full-service team. He and the SEH team have been the constant for the City of Cannon Falls on all infrastructure projects including, but not limited to, the following list:

- 2001 Utility Extension Project, Elevated Water Tower and Water Booster Station – All three projects were funded through the Public Facilities Authority
- Design and Construction of the Elevated Water Tower
- Water Booster Station at the Corner of 4th and Belle Streets
- Cedar Hills and 2nd Street Reconstruction Project
- Park Street Lift Station Replacement
- Architect on Cannon Falls Library
- TH 20 Turn Lane Improvement and Mensing Way Construction
- 318th Street Paving
- River Road Re-alignment and City Hall Parking Lot Improvements
- Cannon Industrial Boulevard Street and Utility Extension Project
- 2011 Westside 1 Street Reconstruction Project
- St. Ansgar's Lutheran Church Utility Extension
- 2013 Eastside 1 Street Reconstruction Project
- CSAH 24 and Hwy 52 Interchange Road and Utilities
- 2016 Westside 2 Street Reconstruction Project
- TH 19 Utility Extensions
- 2018 Eastside 2 Street Reconstruction Project
- Alexander Court Street Extension

We look forward to the opportunity to serve as an extension of your staff and provide local, responsive services. Please don't hesitate to contact me at 612.720.5883 or ganderson@sehinc.com if you have any questions or would like additional information.

Respectfully submitted,

SHORT ELLIOTT HENDRICKSON INC.



A handwritten signature in black ink that reads "Greg F. Anderson".

GREG F. ANDERSON PE (MN)
PROJECT MANAGER



TABLE OF CONTENTS

COVER LETTER/TITLE PAGE.....	1
IDENTIFICATION AND QUALIFICATIONS OF ASSIGNED PERSONNEL.....	4
DETAILED APPROACH TO THE SCOPE OF SERVICES	11
BASIS FOR COMPENSATION	16
REFERENCES AND POTENTIAL CONFLICTS OF INTEREST	19
DISCLOSURES AND ASSURANCES	20

The specific licenses and credentials of the team members are described in the personnel and/or resume section of this document.

©2020 Short Elliott Hendrickson Inc.

The information contained in this Proposal was prepared specifically for you and contains proprietary information. We would appreciate your discretion in its reproduction and distribution. This information has been tailored to your specific project based on our understanding of your needs. Its aim is to demonstrate our ideas and approach to your project compared to our competition. We respectfully request that distribution be limited to individuals involved in your selection process.

SEH is a registered trademark of Short Elliott Hendrickson Inc.

CANNO 155928



Identification and Qualifications of Assigned Personnel

COMPANY OVERVIEW

BUILDING A BETTER WORLD FOR ALL OF US®

Short Elliott Hendrickson Inc. (SEH®) is a 100% employee-owned company providing engineering, architectural, planning and environmental services to public and private clients throughout the country. Our more than 800 employee-owners deliver valuable solutions in the Buildings, Energy, Environmental, Infrastructure, Transportation and Water markets. Our collective purpose and body of work is focused on Building a Better World for All of Us®.

“Building a better world” embodies our commitment to improving quality of life through safer roads, bridges, parks and trails; renewable energy and sustainable design; and cleaner air, drinking water, rivers and lakes. “For all of us” means we design customized solutions for our clients, including the residents and businesses in the communities we serve, employees in the companies we serve and citizens of the world.

Much of the work we do at SEH is providing engineering services to a wide array of communities, as an extension of municipal staff. We have been serving clients for more than 90 years, and many of our clients have been with us for nearly that long, as our deep Midwest roots have translated to unparalleled local familiarity and strong, lasting relationships with the agencies and entities we work with and/or serve.

OUR CLIENTS

Since 1927, we’ve helped clients overcome challenges through strategically tailored services. We understand our public clients—local governments and state, regional and federal governmental agencies—must meet a wide array of needs with often limited resources. When working with clients in the private sector we help businesses respond to the dynamic needs of the marketplace. You’ll find our clients across the United States, with evidence of our work in 42 states.

WHY SEH?



IDEAS THROUGH COMPLETION

As a multidisciplinary company with professionals at every phase of a project lifecycle, we’re capable of moving complex projects from idea through completion. Whether you prefer the traditional design-bid-build method, favor design-build services or prefer a hybrid approach, we can accommodate your project needs.



PROJECT FUNDING

Our services extend beyond engineering, architecture and planning. We also help our clients secure funding for their projects. Our community development and project funding services include grant writing, funding research and analysis, grant administration and prevailing wage compliance.

SHORT ELLIOTT HENDRICKSON INC.

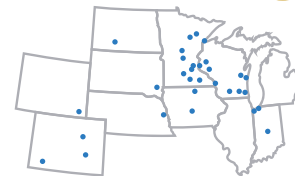


Founded in

1927

HAS GROWN TO 31

locations



EMPLOYING



800+

engineers, architects, planners, scientists and talented professionals

WHO WORK TOGETHER TO SERVE

4

 market areas: mobility, better places, clean water and renewing infrastructure

AN IMPRESSIVE 80%

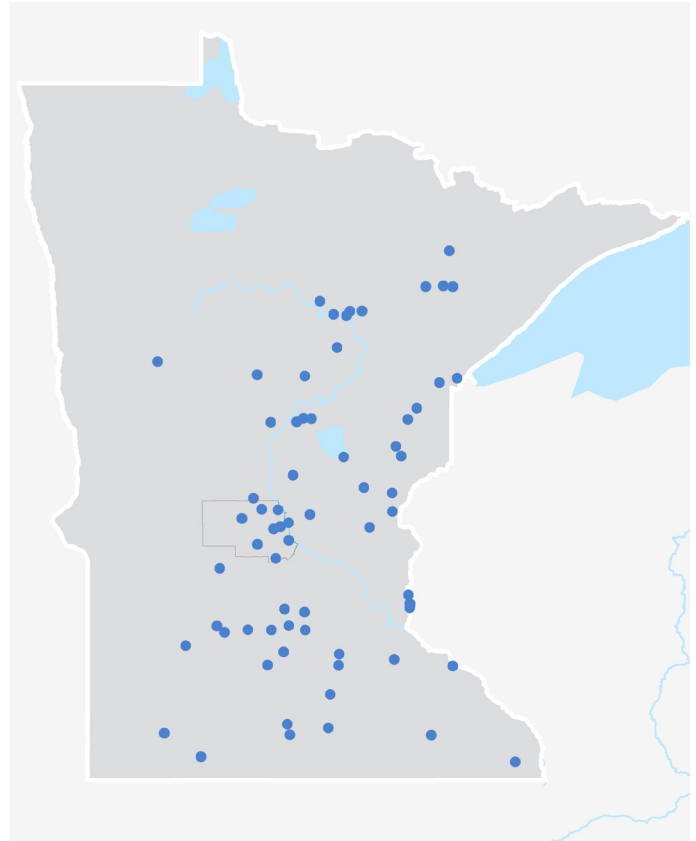


of our clients are repeat customers

COMMUNITIES SERVING AS CITY ENGINEER

SEH assists more than 65 municipalities across Minnesota with comprehensive municipal infrastructure services.

Amboy	Glencoe	Renville
Backus	Hamburg	Richmond
Barnum	Hill City	Riverton
Bayport	Holdingford	Rush City
Becker	Ironton	St. Augusta
Belview	Kimball	St. Mary's Point
Biwabik	La Prairie	St. Stephen
Brownnton	Lafayette	St. Joseph
Buffalo Lake	Lakefield	Sandstone
Caledonia	Lakeland	Sauk Rapids
Cambridge	Lakeland Shores	Scanlon
Cannon Falls	Lake City	Silver Lake
Cohasset	Lake St.	Spicer
Coleraine	Croix Beach	Stewartville
Deer River	Marble	Tower
Deerwood	Montgomery	Upsala
East Gull Lake	Moose Lake	Vernon Center
Elysian	Mora	Virginia
Emily	New Prague	Wahkon
Finlayson	New Germany	Waite Park
Foley	Olivia	Waldorf
Freeport	Pierz	
Fulda	Pine City	
Gaylord	Proctor	



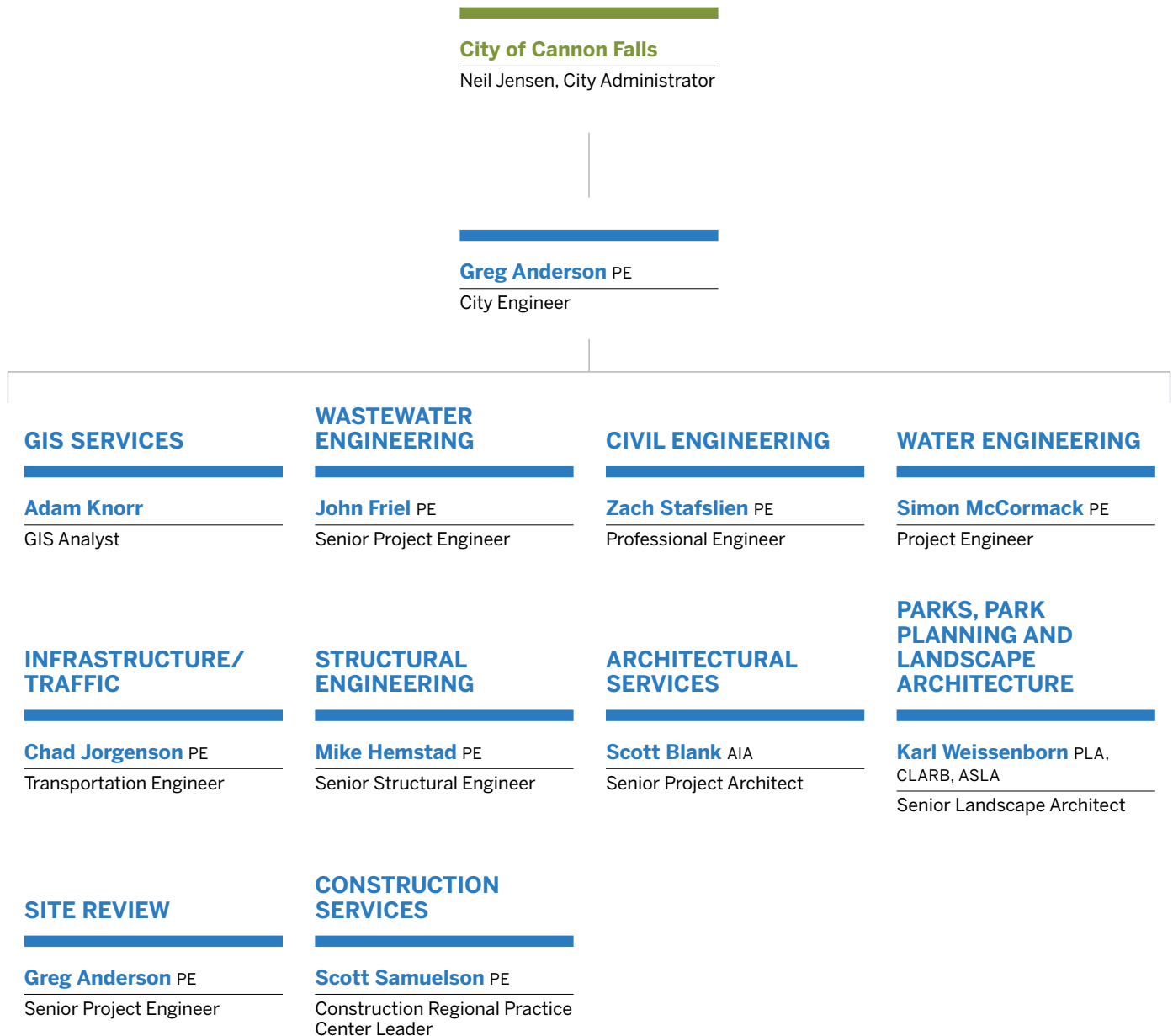
ADDITIONAL SERVICES

- Airport Planning and Design
- Architecture
- Bridge Design and Inspections
- Civil Engineering
- Community Planning
- Construction Services
- Dams/Levees/Reservoirs
- Drinking Water
- Energy Sources
- Community Development and Project Funding
- Environmental Services
- Flood Management
- Geographic Information Systems
- Geotechnical Engineering
- Highway Design
- Land Development
- Landscape Architecture
- Mechanical/Electrical
- Municipal Services
- Natural Resource Sciences
- Planning
- Protective Coatings Management
- Right-of-Way Services
- Site Design and Development
- Solid Waste Management
- Structural Engineering
- Surveying
- Traffic Engineering
- Transportation Planning
- Urban Design
- Wastewater
- Water Resources
- Watershed Engineering
- Wetland Services
- Zoning Administration

KEY PERSONNEL

As city engineer, Greg will draw on his extensive experience in Cannon Falls managing your projects and communicating with your staff to continue to provide responsive and thoughtful services for the City. He and the rest of the SEH team are committed to providing services that result in durable and cost-conscious project outcomes. Each member of the team below has already worked on projects in Cannon Falls and will continue to work on future projects.

TEAM ORGANIZATIONAL CHART



GREG ANDERSON PE

CITY ENGINEER



Greg has served as city engineer and primary point of contact for the City since 2006. This role includes attendance at City Council meetings, Planning Commission meetings, Public Works Commission meetings and work sessions. He has performed a wide variety of city engineering activities for street, utility, water treatment and wastewater treatment projects, as well as drainage projects.

Greg's entire 25+ year career at SEH has been rooted in municipal engineering. In addition to serving Cannon Falls for nearly 20 years, Greg is the city engineer in four other communities similar in size to Cannon Falls. Similar to Cannon Falls, Greg has worked in these four cities for over a decade and, in some cases such as Rush City, Mora and Sandstone, Greg has worked on projects for them during his entire 25-year career at SEH, a testament to his dedication. He is backed by a full-service team and has been the constant for the City of Cannon Falls on all infrastructure projects including:

Greg has delivered more than

\$25 million of Cannon Falls

projects over the last 20 years.

CANNON FALLS PROJECT EXPERIENCE

- 2001 Utility Extension Project, Elevated Water Tower and Water Booster Station – All three projects were funded through the Public Facilities Authority
- Design and Construction of the Elevated Water Tower
- Water Booster Station at the Corner of 4th and Belle Streets
- Cedar Hills and 2nd Street Reconstruction Project
- Park Street Lift Station Replacement
- Architect on Cannon Falls Library
- TH 20 Turn Lane Improvement and Mensing Way construction
- 318th Street Paving
- River Road Re-alignment and City Hall Parking Lot Improvements
- Sewer Bridge Replacement- Predesign and funding
- Cannon Industrial Boulevard Street and Utility Extension Project
- 2011 Westside 1 Street Reconstruction Project
- St. Ansgar's Lutheran Church Utility Extension
- 2013 Eastside 1 Street Reconstruction Project
- CSAH 24 and Hwy 52 Interchange Road and Utilities
- 2016 Westside 2 Street Reconstruction Project
- TH 19 Utility Extensions
- 2018 Eastside 2 Street Reconstruction Project
- Alexander Court Street Extension

Greg's additional Cannon Falls experience includes, but is not limited to, the following areas:

- Cooperative agreements with MnDOT
- Wellhead protection project
- Water model updates
- Stormwater Utility Implementation and ongoing credit reviews
- Park and trail projects
- Review of proposed development projects for compliance with City standards and specifications
- Special assessment preparation and application
- Outside funding assistance

25

YEARS OF EXPERIENCE



EDUCATION

Bachelor of Science
Civil Engineering
North Dakota State University-Fargo



REGISTRATIONS/CERTIFICATIONS

Professional Engineer in Minnesota



PROFESSIONAL ASSOCIATIONS

Minnesota Public Works Association, Member
American Public Works Association, Member
City Engineers Association of Minnesota, Member

SEH is an active member in and supporter of the Cannon Falls Chamber of Commerce. Greg regularly attends Chamber events.

ADAM KNORR REG

GIS ANALYST

Adam is a GIS analyst with extensive experience working with GIS applications as well as GPS technologies. He is experienced in urban and land use planning and mapping of municipal services, and has assisted with all Cannon Falls GIS infrastructure updates since Cannon Falls signed up with Goodhue County to host their GIS data.

EXPERIENCE

- o Yearly GIS Updates and Coordination with City and Goodhue County (City's GIS Site-Host) – Cannon Falls, MN
- o 2018 Street Improvements – Cannon Falls, MN
- o 2016 Street Improvements – Cannon Falls, MN
- o Water Model Update – Cannon Falls, MN



11
YEARS OF
EXPERIENCE



EDUCATION

Bachelor of Science
Environmental and Natural Resources
University of Minnesota-Twin Cities

Certificate
GIS Science and Technologies
University of Montana-Missoula

JOHN FRIEL PE

SENIOR WASTEWATER ENGINEER

John has extensive civil and environmental experience, including water and wastewater treatment, stormwater and sewage pumping system design and construction projects. He has worked with facilities ranging in size from less than 0.01 to 250 mgd. John has worked on all phases of project delivery and has prepared water and wastewater system plans and specifications, cost estimates, studies, evaluations, reports and facility plans utilizing numerous treatment technologies for both municipal and industrial clients.

EXPERIENCE

- o Cannon River Sewer Bridge Removal/Pre-Design – Cannon Falls, MN
- o Lift Station Replacement – Cambridge, MN
- o East Side Utilities Plan – Rosemount, MN
- o Lorentz Meats Expansion, Wastewater Pre-treatment Review – Cannon Falls, MN



26
YEARS OF
EXPERIENCE



EDUCATION

Master of Science
Civil Engineering
University of Minnesota-Minneapolis

Master of Business
Business Administration
DePaul University-Chicago, IL



REGISTRATIONS/CERTIFICATIONS

Professional Engineer in MN, WI, SD,
IL and AK

ZACH STAFSLIEN PE

PROFESSIONAL ENGINEER

Zach has comprehensive experience in civil engineering and stormwater management, including surveying for centerline of roads, field inspection of public improvement projects, developing stormwater models and managing right-of-way encroachment violations. He has worked on design teams preparing feasibility report drawings, preliminary designs and cost estimates, and has also worked on final design projects and prepared final bidding documents.

EXPERIENCE

- o Storm Sewer Model/Site Design Reviews (Casey's Expansion, Cannonbelle's Cheese, NNG Maintenance Site) – Cannon Falls, MN
- o 2020 Street Plans – Cambridge, MN
- o 2018 Street Improvements – Cannon Falls, MN
- o Water Model Update – Cannon Falls, MN



8
YEARS OF
EXPERIENCE



EDUCATION

Bachelor of Science (Cum Laude)
Civil Engineering
Mankato State University



REGISTRATIONS/CERTIFICATIONS

Professional Engineer in MN
OSHA 30-Hour Safety

SIMON MCCORMACK PE

PROJECT ENGINEER

Simon is a professional engineer with in-depth knowledge of water system engineering from design to operation. Simon is well-informed about the Safe Drinking Water Act, Minnesota Plumbing Code, Minnesota Well Code and procedures for enforcing these standards. He is proficient in AutoCAD, Civil 3D, Microsoft Office Suite, ArcMap and JIRA.

EXPERIENCE

- Well 4 and Well 5 Review and Compliance – Cannon Falls, MN
- West Water Tower – Cambridge, MN
- Northwest Metro Water Study (Metropolitan Council Environmental Services) – St. Paul, MN
- 2018 Water Comp Study – Rosemount, MN



7
YEARS OF
EXPERIENCE



EDUCATION

Bachelor of Science
Civil Engineering
University of Minnesota-Duluth



REGISTRATIONS/CERTIFICATIONS

Professional Engineer in MN

CHAD JORGENSEN PE, PTOE

TRANSPORTATION ENGINEER

Chad is a professional traffic engineer specializing in transportation engineering. Chad has seven years of experience and is a Certified Professional Traffic Operations Engineer. He specializes in traffic operations, traffic safety and intersection control evaluations, as well as maintenance of traffic and traffic control plans. Most recently, Chad has specialized in arterial corridor operations and signal timing projects throughout the State.

EXPERIENCE

- TH 52 Access and Safety Study (MnDOT District 6) – Cannon Falls, MN
- 2018 Street Improvements – Cannon Falls, MN
- Main Street Final Design – New Prague, MN
- TH 19 Reconstruction – New Prague, MN



7
YEARS OF
EXPERIENCE



EDUCATION

Bachelor of Science
Civil Engineering
University of Minnesota-Duluth



REGISTRATIONS/CERTIFICATIONS

Professional Engineer in MN and IA
Professional Traffic Operations
Engineer (PTOE)

MIKE HEMSTAD PE

SENIOR STRUCTURAL ENGINEER

Mike has served as project manager and structural engineer on architectural and industrial buildings; historic structures; bridges; water and wastewater treatment plants; large sewer structures; dams; retaining walls; and other miscellaneous structures. He is proficient in the use of all types of structural systems and delivery methods, including complex projects with multiple bid packages. Mike also has significant experience working with preservation experts and officials on rehabilitation projects and the restoration of historic buildings.

EXPERIENCE

- John Burch Park Bleacher Structural Review and Report – Cannon Falls, MN
- Sperry Communication Tower – Eagan, MN
- Wastewater Treatment Facility Plan and Design – Cambridge, MN
- Community Center Renovation – Fairfax, MN



36
YEARS OF
EXPERIENCE



EDUCATION

Master of Civil Engineering
University of Minnesota-Minneapolis
Bachelor of Civil Engineering
University of Minnesota-Minneapolis



REGISTRATIONS/CERTIFICATIONS

Professional Engineer in MN, ND, WI,
IL, AL, VA, SD and IA

SCOTT BLANK AIA

SENIOR PROJECT ARCHITECT

Scott is an architect/project manager with extensive experience in architectural leadership roles and management. He is an accomplished design professional specializing in national scale projects. Scott is skilled at identifying process improvements to drive architecture/engineering best practices that result in project cost savings and execution efficiency. He is well-versed in all aspects of the project process, and he is a creative thinker who looks for innovative solutions in addressing project and business challenges.

EXPERIENCE

- Library QA/QC Issues – Cannon Falls, MN (Scott has assisted Greg at no cost to the City to address the water intrusion issue, carpet fraying and paint issues not addressed by the construction manager)
- Municipal Building Improvements – Maplewood, MN
- 2019 Fire Station – Buffalo, MN



32
YEARS OF
EXPERIENCE



EDUCATION

Master of Architecture
University of Minnesota-Minneapolis

Bachelor of Science
Architecture
University of Wisconsin-Milwaukee



REGISTRATIONS/CERTIFICATIONS

Licensed Architect in MN, ND, WI, IL, FL, NJ, VA, SD, WA, IA, IN, OR, RI, MD, OH, PA, KS and MO

KARL WEISSENBORN PLA, CLARB

SENIOR LANDSCAPE ARCHITECT

Karl is a senior landscape architect, manager of professional staff and project manager with wide-ranging experience in both public and private practice, leading interdisciplinary professionals to successfully deliver complex projects. Karl is proficient at developing difficult and fiscally constrained projects, from preliminary planning stages through detailed final design. He is skilled with stakeholder facilitation and consensus building as well as environmental documentation and mitigation strategies.

EXPERIENCE

- Cross Lake Overlook Plaza – Pine City, MN
- Street Improvements – Cambridge, MN
- Main Street Final Design – New Prague, MN
- Tracy Avenue, Valley View Road and Valley Lane Roundabout – Edina, MN



31
YEARS OF
EXPERIENCE



EDUCATION

Bachelor of Landscape Architecture
University of Minnesota-Minneapolis



REGISTRATIONS/CERTIFICATIONS

Professional Landscape Architect in MN, MI, ND, IA and SD

Landscape Architect, Council of Landscape Architectural Registration Board

SCOTT SAMUELSON PE

CONSTRUCTION REGIONAL PRACTICE CENTER LEADER

Scott serves as the Practice Center Leader for the Construction, Surveying and Right-of-Way practices at SEH and for clients and staff in Minnesota, North Dakota, South Dakota and Iowa. Scott's specific areas of expertise include transportation engineering, surveying, structural, right-of-way services, traffic and construction administration and observation. His work encompasses nearly three decades of improving transportation infrastructure throughout the Upper Midwest.

EXPERIENCE

- CSAH 22 (TH 112 Turn-Back) Construction Administration – Le Sueur County, MN
- US 63 Mississippi River Bridge (MnDOT District 6) – Red Wing, MN
- I-494 Rehab and Expansion (MnDOT Metro District) – Plymouth, MN
- 2016 Street Improvements – Cannon Falls, MN



34
YEARS OF
EXPERIENCE



EDUCATION

Bachelor of Science
Civil Engineering
University of Wisconsin-Platteville



REGISTRATIONS/CERTIFICATIONS

Professional Engineer in MN, IA and WI



Detailed Approach to the Scope of Services

The primary focus of SEH's services has been, and continues to be, municipal clients like Cannon Falls. When working with SEH, you can continue to expect:

- Personalized, client-centered service
- A single contact person and "core team" to serve as a seamless extension of your staff
- An honest, trustworthy interface that strives for a long-term, equally beneficial relationship
- A relationship which continuously works to develop and improve our capability to match your needs and expectations
- Responsiveness that equals your sense of urgency

Greg Anderson will continue to serve as the city engineer and primary contact for the City and all project-related communications, as he has since 2006. We have provided our detailed approach to the Scope of Services provided in the RFP below.

GENERAL AND PROJECT MANAGEMENT

Greg will focus on monitoring and directing resources to achieve the desired deliverables and meet project schedules and budgets. He will work with the rest of the team to assign a project manager to meet the needs of each of your projects.

Once a project is underway, SEH's focus areas for project management will include the following:

- **Project kick-off and schedule** – After establishment of the project schedule and budget, we will handle action items, key decisions, and follow-up and documentation as required.



Minnesota Street at East Side Park after the 2018 street reconstruction project.

- **Communication with the City** – We will maintain day-to-day communication at an agreed upon frequency. Our team will also handle meeting preparation and follow-up as appropriate.
- **Quality Assurance/Quality Control (QA/QC) Plan** – It is critical to follow an established QA/QC program to ensure project budgets are met, from establishing realistic construction cost estimates to limiting changes during construction. We will customize our Companywide QA/QC program for each project to minimize budget surprises.
- **Managing schedule and budget** – We will develop a schedule and budget for each project that identifies the major tasks and critical path items to accomplish your goals.
- **Identify any permitting or regulatory requirements** – Our staff will then provide the appropriate coordination, and reach out to additional SEH disciplines as appropriate, to get approvals and avoid project delays.

PLANNING

We understand the importance of working with you to understand how projects will fit in the big picture. We are committed to helping you manage your existing infrastructure and plan for future improvements.

Thoughtful planning will help you maximize resources to make necessary improvements.

Infrastructure improvements are a significant capital investment for the community. We will provide comprehensive planning for infrastructure to make sure improvements meet the following criteria:

- Consider future community needs
- Provide properly sized infrastructure
- Use existing infrastructure wherever practical and replace it where necessary

SEH has helped Cannon Falls with the preparation and implementation of CIP projects for over a decade.

Based on this experience, we will work with you to make sure your CIP incorporates the following best practices:

- Synchronizes capital and operating budgets
- Systematically evaluates competing demands for resources based on a prioritization matrix reflecting the community's long-term goals and objectives
- Identifies, prioritizes and optimizes the financing of capital projects
- Links strategic and comprehensive plans with fiscal capacity
- Informs the public about the community's investment in infrastructure

POLICIES AND PROCEDURES

As times change, so do the needs and priorities of the community, as well as those of the regulatory agencies. SEH can assist the City of Cannon Falls to identify those policies and ordinances that will address new needs and priorities in the community into the future.

SEH will look for opportunities that benefit the City and head off potential issues before they become problems. This proactive approach will keep operations consistent with City policies and values, as well as relevant regulations.

WATER RESOURCES

SEH water resources staff will work cooperatively with the City, making sure you stay current with federal, state and local stormwater requirements and management standards. These services will include the following:

- Development reviews for stormwater compliance
- Design of stormwater treatments systems, stormwater conveyances and stormwater pollution prevention plans for City projects
- Creating/updating existing ordinances to include acceptable stormwater requirements and regulations

SEH assisted the City with the implementation of its stormwater utility and provides the review and approval of credit requests. We will continue to work with you to identify and address your water resources needs.

PUBLIC WORKS PROJECTS

SEH has a long track record of successful engineering services and project management for the construction of municipal public works projects in Cannon Falls.

One of the benefits of working with SEH for public works projects is the fact that we offer all disciplines in-house. That means we can provide all listed services for Cannon Falls without enlisting subconsultants. Every member of our project team already has experience on Cannon Falls projects and with Cannon Falls staff.



This depth of resources within SEH simplifies communication and project delivery.

It is important for you to know that SEH can provide all the required services listed in the RFP to be able to respond effectively to any project need that may arise. With multiple offices close to Cannon Falls, we will always be able to mobilize the required resources for your projects.

We are able to handle projects in each service area, often with a quick turnaround, by providing the following:

- One point of contact who is experienced in facilitating communication between City staff and subject matter resources
- Experienced project managers across a range of disciplines
- Local, multidisciplinary services in-house to respond quickly

DEVELOPMENT PROJECTS

It is important to remember that a community like Cannon Falls has much to offer, and with the exception of some sort of unique economic development project, the City does not need to cater to nor subsidize development. Development activity should not cost the City or your taxpayers.

Costs for dealing with developers and engineering development reviews and/or city attorney legal services should be "pass through costs" paid by the developer. We will continue with development review, including attending meetings as appropriate. Potential elements for development review include the following:

- Initial developer contact
- Reviews, negotiations, preparing and executing developer agreements

- Managing financial sureties for the City
- Approving plans, permits and administering construction work
- Enforcing non-compliance issues

CITY PARKS

Our urban design group has extensive experience in planning and developing natural and formal parks, along with trail systems to serve those parks. Our proposed team at SEH has worked with various park improvements in city parks and on school properties, including a number of efforts in Cannon Falls:

- Trail Bridge Replacement in Two Rivers Park
- Park & Ride Trail Extension
- CSAH 17 Trail Extension Study
- John Burch Park Bleacher review
- Cannon Valley Trail Trailhead Improvements

Pedestrian and bicycling routes around Cannon Falls are an important asset to provide safe access to recreational amenities as well as retail, educational and residential areas. In collaboration with state and federal programs for funding development of these resources, such as the DNR Trail Grant for the connection of the Cannon Valley Trail to the Mill Towns Trail through Hannah's Bend Park, the City may access other development funds which are a part of regional transit and transportation development. We will continue to work with you to identify and pursue these opportunities.

CONSTRUCTION SERVICES

SEH's construction services consist of on-site observation and surveying for a wide variety of engineering projects. We believe this firsthand involvement is the best way to

ensure that the quality designed and specified will actually be installed by the contractor.

We have also found that a positive working relationship with City staff, contractors, developers and project stakeholders helps to create a quality project, one where everyone involved has pride of ownership. With this foundation in place, the process for construction services will typically include these steps:

- Start with the project planning meeting to initiate the design plans according to the expectations of the City of Cannon Falls
- Hold a pre-construction meeting including City staff, contractors involved and utilities representatives prior to commencing field activities
- Keep standard documentation that includes field observation reports of conditions prior to and during construction of facilities
- Convene regular construction progress meetings as warranted per the complexity of the project and conditions affecting the process
- Recommend acceptance by the City of the completed project upon satisfactory completion of all required work by the contractor
- Maintain records of work completed and administer pay requests
- Provide the City with electronic (PDF) and hard copy record drawings (as-builts) for your records upon completion of the project
- Update the City utility maps in GIS and coordinate updates with Goodhue County

Construction projects are administered by both the project manager and resident project representative (RPR). They are supported by additional staff including experienced



Eastside Park



SEH can provide video observation of construction sites through the use of our in-house drone services or webcam services. This can capture all portions of a construction site and/or provide round-the-clock observation and documentation of conditions.

office personnel and surveyors. Our construction services are set up to maintain communication between the contractor, City staff, residents and utilities.

BIDDING SERVICES

SEH offers both traditional bidding services and alternate delivery methods. Traditional services typically include the following:

- Assisting the City with advertising the project through award of the contract
- Conduct pre-bid conference for potential bidders to ask questions and get clarity on design intent of bid documents
- Assist the City in providing answers to questions and generating addenda (if required)
- Prepare and distribute bid documents
- Provide letter of recommendation for bid award
- Review and coordinate the bid provisions and award compliance with relevant regulations
- Execute contracts with contractor and City

In addition to these traditional bidding services, we can work with you on alternate methods. For example, SEH assisted the City with the alternate project delivery method of Best Value Contracting for the 2016 Westside II Street Reconstruction Project. SEH prepared the bidding documents required to comply with the State's requirements for Best Value Contracting, facilitated the contractor interviews and compiled the scoring process of the contractor's bids.

Our bidding services also include virtual options, if required, so that the City's projects can move forward. In view of the current social distancing requirements, SEH has continued to operate our pre-bid meetings, bid letting and receipt of documents in full compliance with regulations, with no delay to our communities and their important infrastructure construction projects.



ENGINEERING REPORTS AND TECHNICAL CORRESPONDENCE

SEH professional staff routinely provide recommendations for preliminary studies and evaluation of engineering plans, principles and operational reports to support the operation of the City's infrastructure. This reporting and documentation is provided in formal reports, meetings with City staff and Council, and presentations to the general public.

These evaluations involve our engineering, planning and scientific staff in concert with our in-house survey teams as well as funding development specialists. As projects evolve from concept to feasibility evaluation to design and construction, reporting to City staff, Council and completion of reports to jurisdictional authorities completes the process of disclosure and due diligence required of all publicly funded projects.

Our reporting may involve any of the following:

- Preliminary evaluation
- Evaluation of conformance to ordinance
- Comparison to Comprehensive Plans and engineering standards
- Feasibility studies and reporting
- Assessment roll evaluations
- Water, storm and sanitary sewer rate studies
- Surface water management systems
- Wetland delineations and conformance to state and federal code
- Traffic studies and plans for submission to county and state jurisdictions
- Completion of State Aid reports

We will prepare the appropriate reports and technical correspondence as necessary for any given project, as well

as maintain a library of the project files in accordance with public record retention requirements.

CITY MEETINGS

We are prepared to participate and facilitate in any City meetings, whether internal or external, as listed in the RFP. Greg will continue to attend meetings and be available for communication with your department heads to identify, address and act on any issue which requires assistance.

SEH staff will advocate and act on the City's behalf during internal and external meetings.

We are confident this will be a successful approach as we proceed with these steps:

- Follow a prepared agenda of projects that your staff wants covered each month. This saves time for both your staff and ours.
- Include City staff you identify who are critical to the agenda items. City staff involvement may change month to month based on the current needs to allow your staff to focus on other needs.
- Clearly identify project roles, including City and SEH responsibilities, as well as needed follow up. We will also discuss planned level of effort for any work we will provide to ensure it matches your expectations.

Additionally, we will revisit our communication plan with you to confirm it meets your needs and keeps projects moving efficiently. This will include considerations for the following meeting types:

- **Developer meetings** – SEH will be available to meet with developers about proposed project as requested. We will provide our assistance to communicate about standards and requirements in the community so that proposed development projects are consistent with City policy.
- **City Council, Park and Planning Commission meetings** – Greg will continue to attend Council meetings, as well as planning commission meetings or work sessions as needed. He will be available as needed to provide updates and to answer questions. This is also part of our basic service agreement.
- **Additional stakeholder or local meetings** – We will be available to attend various meetings as requested to provide our assistance or to help communicate to the other stakeholders in the community.

CONSTITUENT REQUESTS AND ISSUES

CANNON FALLS EXAMPLES

Having served as city engineer the past 15 years, Greg has had the pleasure to interact with city residents, business owners and developers on a variety of project issues. A few recent examples would be:

- Building lot grading and drainage concerns. Greg has met with several of the recent homeowners in Woodridge Bluffs to discuss their lot grading.
- New home at #200 Limestone Road did not match grading plan - Greg worked with the home builder and neighbor to the north to address grading and drainage issues.
- Resident on 2016 Street Project stopped Greg and city administrator during a project walk-through to comment that Jake, the SEH inspector, was always available and knowledgeable.
- Several local utility contractors will regularly contact Greg for permitting assistance, utility information on building lots and history of past projects.

OUTREACH APPROACH AND TOOLS

SEH has communicated with Cannon Falls stakeholders in a number of ways over the years. We offer an effective public involvement/information program that uses multiple methods to communicate information, timelines and options:

- Neighborhood meetings
- Newsletters
- E-mails
- Website updates to communicate information, timelines and options

Situations and events sometimes call for flexibility and adaptability with engagement. SEH has successfully implemented options from a number of online engagement tools for our clients:

- Virtual meetings and video conferencing
- Online surveys
- Strategic social media
- Supporting a City-based website
- Email outreach using tools that can track outreach and engagement results

We will continue to work with you to choose the best tools for communication with constituents.

\$ | Basis for Compensation

Our primary goal in serving you is to provide superior service at a fair price. The total cost for high-quality service from similarly qualified engineering firms is essentially the same. Hourly billing rates are only part of the formula for the total cost at the end of a project. Low hourly billing rates are sometimes equated with better value, but often low rates mean that less experienced staff may be providing most of the service while spending more hours than an experienced engineer that knows your city inside and out. Low rates may also reflect billing for every minute, phone conversation and meeting, resulting in higher overall costs.

SEH's extensive knowledge of your city and its infrastructure gives Cannon Falls by far the most efficient and cost-effective option for city engineering than any other firm can provide.

SEH proposes to continue its current billing agreement with the City where Greg attends up to three meetings (City Council, Public Works Commission, Planning Commission, etc.) per month at no cost to the City. SEH also provides up to eight hours of Greg's general engineering time per month at half rate. Our current rate table that we propose to continue for the City is listed on the next page. No games, no retainer, not two rates for the city engineer depending if it's general engineering or project work - just straight rates for the work provided.

A sample invoice is provided for reference, and a copy of the fee schedule and method of billing can be found on the following pages.



**THE CITY IS BETTER SERVED
WITH A CONSULTANT YOU
TRUST, WITH A LOOK AT
THE VALUE THAT MAY EXTEND
BEYOND THE BILLING CYCLE**



SEH HOURLY BILLABLE RATES

SEH proposes to continue with the following fee schedule for the staff personnel who would continue to work on the City of Cannon Falls projects.

CLASSIFICATION - OFFICE AND FIELD STAFF	BILLABLE RATE ⁽¹⁾
Principal/Senior Project Specialist	\$164.00
City Engineer	\$158.00
Project Manager	\$141.00
Project Engineer/Architect/Planner/Scientist	\$133.00
Professional Land Surveyor/Survey Party Chief	\$133.00
Lead Technician/Senior Project Representative	\$119.00
Staff Engineer/Architect/Planner/Scientist	\$105.00
Technician/Project Representative	\$97.00
Associate Technician	\$90.00
Office/Administrative	\$90.00

Effective: January 1, 2020
 Expires: December 31, 2020

SEH SCHEDULE OF EXPENSES

Vehicle Mileage Rates

Current IRS rate if IRS rate is whole cents, otherwise rounded down to nearest whole cent.

Vehicle Allowance Costs

Resident Project Representative\$16.00/day
 Survey and Field Vehicle.....\$4.50/hour + mileage

Survey Equipment

Robotic Total Station.....\$30.00/hour
 Global Positioning System (GPS) \$30.00/hour

Computer Equipment

No Charge

Other Equipment Expenses

SEH uses many different types of equipment, such as traffic counters; flow meters; air, water, and soil sampling kits; inspection cameras; density meters; and many others. Our equipment is frequently upgraded to utilize current technology. You will be charged for equipment usage per your agreement with SEH.

Rates are subject to change.

Charges for direct expenses are described on the attached SEH Schedule of Expenses.

SEH offers the following contract terms for City Engineering services:

1. Engineering services initiation, contract scoping, meetings during the contracting period, and contracting will be at no charge to the City. Charges will not be billed until actual agreements are signed by the City.
2. A scope of services and contract amount will be determined for each project. The contract amount may be exceeded only due to change in scope or other circumstances described in the agreement for professional services.

SAMPLE INVOICE

Invoice

Short Elliott Hendrickson, Inc. FEIN: 41-1251208 | 651.490.2000 | 800.325.2055

Invoice Number: **387363**

BILL TO:		
Accounts Payable City of Cannon Falls 918 River Rd Cannon Falls MN 55009		

REMIT PAYMENT TO:		
Short Elliott Hendrickson, Inc. PO Box 64780 Saint Paul, MN 55164-0780		

Pay This Amount \$1,742.00		
Due Date	10-JUL-20	
Invoice Date	10-JUN-20	
Bill Through Date	30-MAY-20	
Terms	30 NET	
SEH Customer Acct #	1005	
Customer Project #		
Agreement / PO #	123363	
Project Manager	Greg Anderson ganderson@sehinc.com 651.490.2000	
Client Service Manager	Greg Anderson ganderson@sehinc.com 651.490.2000	
Accounting Representative	Lynn Howe lhowe@sehinc.com 651.490.2000	

Project #	Project Name	Project Description
123363	CANNO City Engineering	City Engineering Services

Notes:

Task: 93007 - STREET SYSTEM

Direct				
Personnel	Hours	Rate	Amount	
Senior Project Manager				
Anderson, Gregory F (Greg)	10.00	158.00	\$1,580.00	
Senior Admin Assistant				
Hanson, Annejette (Anjie)	7.50	90.00	\$675.00	
	17.50		\$2,255.00	
Fee				
Description				Amount
Half-Price Hours - Per Contract - 8 hrs @ 1/2 x \$158/hr - Greg Anderson				(\$632.00)
				(\$632.00)

Task: 93007 Billing Summary			
	Current Amount	Previously Invoiced	Cumulative
Direct	\$2,255.00	\$26,952.25	\$29,207.25
Fee	(\$632.00)	(\$3,411.00)	(\$4,043.00)
Reimbursed - Expenses	\$0.00	\$230.29	\$230.29

Invoice

Short Elliott Hendrickson, Inc. FEIN: 41-1251208 | 651.490.2000 | 800.325.2055

Invoice Number: **387363**

Task: 93007 - STREET SYSTEM

Task: 93007 Billing Summary			
	Current Amount	Previously Invoiced	Cumulative
Totals	\$1,623.00	\$23,771.54	\$25,394.54

Task: 93007 Total: \$1,623.00

Task: 93010 - GENERAL

Direct				
Personnel	Hours	Rate	Amount	
Staff GIS Analyst				
Knorr, Adam G	1.00	119.00	\$119.00	
	1.00		\$119.00	

Task: 93010 Billing Summary			
	Current Amount	Previously Invoiced	Cumulative
Direct	\$119.00	\$87,263.25	\$87,382.25
Fee	\$0.00	(\$15,341.50)	(\$15,341.50)
Reimbursed - Consultants	\$0.00	\$2,520.50	\$2,520.50
Reimbursed - Expenses	\$0.00	\$2,277.26	\$2,277.26
Totals	\$119.00	\$76,719.51	\$76,838.51

Task: 93010 Total: \$119.00

Invoice total	
	\$1,742.00

Project Billing Summary			
	Current Amount Due	Previously Invoiced	Cumulative
Totals	\$1,742.00	\$197,032.54	\$198,774.54



References and Potential Conflicts

REFERENCES

As a 100% employee-owned company, the foundation of SEH's success is grounded in the satisfaction of our client partners. The following section provides a number of recent and relevant references. We encourage you to contact each reference to verify the commitment we make to each client partner and, ultimately, to further explore how Greg and the proposed SEH team may best serve on your behalf.

Greg's entire 25+ year career at SEH has been rooted in municipal engineering. In addition to serving Cannon Falls for nearly 20 years, Greg is the city engineer in four other communities of similar size. And similar to Cannon Falls, Greg has worked in these four cities for over a decade and in some cases, such as Rush City, Mora and Sandstone, Greg has worked on projects for them during his entire 25-year career at SEH. This is a testament to Greg's and SEH's client service. In several cases, clients that have moved employers have reached out to Greg for services at their new location, such as Mille Lacs County and the City of Harris.

MILLE LACS COUNTY/CITY OF PINE CITY

HOLLY WILSON

Public Works Director/Personnel Director/
Assistant Administrator
320.983.8378
holly.wilson@co.mille-lacs.mn.us

- Holly was also the City Administrator in Pine City in the early 2010s where Greg serves as city engineer.
- Currently Greg is the interim Mille Lac County Engineer as well as providing engineering services on a large street and utility reconstruction project.

RAVENNA TOWNSHIP

CAROLINE SPURGEON

Township Clerk/Treasurer
651.480.1902
clerk@revennatownshipmn.com

- Greg has been the township engineer since 2009.
- SEH has provided design/construction inspection/staking/GIS services/development review.

CITY OF PINE CITY

MATTHEW VAN STEENWYK

City Administrator
320.629.2575
mvansteenwyk@pinecitygov.com

- SEH has worked with the City of Pine City for over 20 years. Greg has been the city engineer since 2010.

CITY OF RUSH CITY

AMY MELL

City Administrator
320.358.4743
amell@ci.rush-city.mn.us

- SEH has been the city engineer in Rush City for over 30 years. Greg has worked on projects for the City for over 25 years and has served as city engineer since 2014.

CITY OF MORA

LINDY CRAWFORD

City Administrator/Utilities Superintendent
320.225.4806
l.crawford@cityofmora.com

JOEL DHEIN

Former City Administrator City of Mora, current project manager for City of Harris
320.333.9879
projectmanager@harrismn.com

- SEH has provided city engineering service for the City since 1984. Greg has been the city engineer since 2003, one of the two SEH engineers to serve the City of Mora since 1983.

CONFLICTS OF INTEREST

SEH does not foresee any potential conflicts of interest in continuing to serve the City of Cannon Falls. SEH serves hundreds of public clients across the State of Minnesota and surrounding area. Should we be approached by any public or private clients about a potential project, we will continue to review to ensure no conflict and discuss these opportunities with City staff before making any decisions.



Disclosures and Assurances

APPLICANT AUTHORITY

Greg Anderson is responsible for the management and administration of all engineering services SEH provides to the City of Cannon Falls and is approved to execute contracts on behalf of SEH.

INSURANCE COVERAGE

SEH is an established firm of more than 800 employees, in business since 1927. SEH carries insurance in professional liability, general liability, automobile and workers compensation.

Errors and Omissions insurance is currently retained through XL Speciality Insurance Co. with \$5/\$10 million limits. Our current policy is in effect through October 1, 2020.

Copies of our insurance coverage can be found below.

GENERAL LIABILITY

ACORD CERTIFICATE OF LIABILITY INSURANCE DATE (MM/DD/YYYY) 9/30/2019

THIS CERTIFICATE IS ISSUED AS A MATTER OF INFORMATION ONLY AND CONFERS NO RIGHTS UPON THE CERTIFICATE HOLDER. THIS CERTIFICATE DOES NOT AFFIRMATIVELY OR NEGATIVELY AMEND, EXTEND OR ALTER THE COVERAGE AFFORDED BY THE POLICIES BELOW. THIS CERTIFICATE OF INSURANCE DOES NOT CONSTITUTE A CONTRACT BETWEEN THE ISSUING INSURER(S), AUTHORIZED REPRESENTATIVE OR PRODUCER, AND THE CERTIFICATE HOLDER.

PRODUCER: Lockton Companies
444 W. 47th Street, Suite 900
Kansas City MO 64112-1906
(816) 960-9000

INSURED: SHORT-ELLIOTT-HENDRICKSON, INCORPORATED
3535 VADNAIS CENTER DRIVE
ST. PAUL, MN 55110-5196

INSURER(S) AFFORDING COVERAGE:
INSURER A: The Continental Insurance Company 35289
INSURER B: National Fire Insurance Co of Hartford 20478

COVERAGES: *****
CERTIFICATE NUMBER: 16334373 REVISION NUMBER: XXXXXXXX

TYPE OF INSURANCE	APOL SUBR	INSURANCE POLICY NUMBER	POLICY EFF DATE	POLICY EXPIRES	LIMITS
A COMMERCIAL GENERAL LIABILITY		6079420587	10/1/2019	10/1/2020	EACH OCCURRENCE \$ 1,000,000 DAMAGE TO RENTALS \$ 500,000 MED EXP (Any one person) \$ 15,000 PERSONAL & ADV INJURY \$ 1,000,000 GENERAL AGGREGATE \$ 2,000,000 PRODUCTS - COMMOD AGG \$ 2,000,000
A AUTOMOBILE LIABILITY		6079420699	10/1/2019	10/1/2020	COMBINED SINGLE LIMIT \$ 1,000,000 BODILY INJURY (Per person) \$ XXXXXXXX BODILY INJURY (Per accident) \$ XXXXXXXX PROPERTY DAMAGE (Per accident) \$ XXXXXXXX
A UMBRELLA LIAB		4079420590	10/1/2019	10/1/2020	EACH OCCURRENCE \$ 10,000,000 AGGREGATE \$ 10,000,000 EL \$ XXXXXXXX
B WORKERS COMPENSATION AND EMPLOYERS LIABILITY		6079421254	10/1/2019	10/1/2020	EL EACH ACCIDENT \$ 1,000,000 EL DISEASE - EA EMPLOYEE \$ 1,000,000 EL DISEASE - POLICY LIMIT \$ 1,000,000

DESCRIPTION OF OPERATIONS / LOCATIONS / VEHICLES (ACORD 103, Additional Remarks Schedule, may be attached if more space is required)

CERTIFICATE HOLDER: 16334373 FOR INFORMATION ONLY

CANCELLATION: SHOULD ANY OF THE ABOVE DESCRIBED POLICIES BE CANCELLED BEFORE THE EXPIRATION DATE THEREOF, NOTICE WILL BE DELIVERED IN ACCORDANCE WITH THE POLICY PROVISIONS.

AUTHORIZED REPRESENTATIVE: *Greg M. Anderson*

ACORD 25 (2016/03) © 1988-2015 ACORD CORPORATION. All rights reserved.

PROFESSIONAL LIABILITY

ACORD CERTIFICATE OF LIABILITY INSURANCE DATE (MM/DD/YYYY) 9/30/2019

THIS CERTIFICATE IS ISSUED AS A MATTER OF INFORMATION ONLY AND CONFERS NO RIGHTS UPON THE CERTIFICATE HOLDER. THIS CERTIFICATE DOES NOT AFFIRMATIVELY OR NEGATIVELY AMEND, EXTEND OR ALTER THE COVERAGE AFFORDED BY THE POLICIES BELOW. THIS CERTIFICATE OF INSURANCE DOES NOT CONSTITUTE A CONTRACT BETWEEN THE ISSUING INSURER(S), AUTHORIZED REPRESENTATIVE OR PRODUCER, AND THE CERTIFICATE HOLDER.

PRODUCER: H. Robert Anderson and Associates, Inc.
8202 Hopkins Center Drive
Burlington MN 55437

INSURED: Short-Elliott-Hendrickson, Incorporated
3535 Vadnais Center Drive
St. Paul, MN 55110

INSURER(S) AFFORDING COVERAGE:
INSURER A: XL Speciality Insurance Co. 37885

COVERAGES: *****
CERTIFICATE NUMBER: 2019 - 2020 REVISION NUMBER:

TYPE OF INSURANCE	APOL SUBR	INSURANCE POLICY NUMBER	POLICY EFF DATE	POLICY EXPIRES	LIMITS
A PROFESSIONAL LIABILITY		DP8994949	10/1/2019	10/1/2020	Each Claim/ Each Policy Year Aggregate \$ 5,000,000 \$10,000,000

DESCRIPTION OF OPERATIONS / LOCATIONS / VEHICLES (ACORD 103, Additional Remarks Schedule, may be attached if more space is required)

CERTIFICATE HOLDER: ISSUED FOR INFORMATIONAL PURPOSES ONLY

CANCELLATION: SHOULD ANY OF THE ABOVE DESCRIBED POLICIES BE CANCELLED BEFORE THE EXPIRATION DATE THEREOF, NOTICE WILL BE DELIVERED IN ACCORDANCE WITH THE POLICY PROVISIONS.

AUTHORIZED REPRESENTATIVE: *Thomas M. Anderson*

ACORD 25 (2014/01) © 1988-2014 ACORD CORPORATION. All rights reserved.

Building a Better World for All of Us[®]

Sustainable buildings, sound infrastructure, safe transportation systems, clean water, renewable energy and a balanced environment. Building a Better World for All of Us communicates a company-wide commitment to act in the best interests of our clients and the world around us.

We're confident in our ability to balance these requirements.

JOIN OUR SOCIAL COMMUNITIES

