

**CITY OF CANNON FALLS
GOODHUE COUNTY, MINNESOTA**

RESOLUTION NUMBER 2594

**A RESOLUTION APPROVING MUNICIPAL CONSENT PROJECT
NO. SAP 025-629-002, ALONG COUNTY STATE-AID HIGHWAY NO. 29**

WHEREAS, plans for Project No. SAP 025-629-002 showing proposed alignment, profiles grades and cross-sections for the construction, reconstruction or improvement of County State-Aid Highway No. 29 within the limits of the City of Cannon Falls as a State Aid Project have been prepared and presented to the City.

NOW, THEREFORE, BE IT RESOLVED: That said plans be in all things approved.

**ADOPTED BY THE CITY COUNCIL OF THE CITY OF CANNON FALLS ON THIS 16th DAY OF
NOVEMBER, 2021.**

SIGNED:

John O. Althoff, Mayor

ATTEST:

Neil L. Jensen, City Administrator

CERTIFICATION

State of Minnesota
County of Goodhue

I hereby certify that the foregoing Resolution is a true and correct copy of a resolution presented to and adopted by the City Council of Cannon Falls at a meeting therefor held in the City of Cannon Falls, Minnesota, on the 16th day of November, 2021, as disclosed by the records of said City in my possession.

Neil L. Jensen, City Administrator

(Seal)

CONSTRUCTION PLAN FOR BITUMINOUS MILLING, BITUMINOUS SURFACING, AND AGGREGATE SHOULDER

LOCATED ON C.S.A.H. 29 BETWEEN T.H. 20 AND DAKOTA CSAH 86

STATE AID PROJECT NO. 025-629-002

GROSS LENGTH	3611.00	FEET	0.684	MILES
BRIDGES-LENGTH	0	FEET	0	MILES
EXCEPTIONS-LENGTH	0	FEET	0	MILES
NET LENGTH	3611.00	FEET	0.684	MILES

FROM: A POINT 1159ft NORTH AND 1942ft EAST OF THE WEST QUARTER CORNER SECTION 7, T112N, R17W.

TO: 1508ft NORTH OF THE NORTHWEST CORNER SECTION 7, T112N, R17W.

INDEX

1. TITLE SHEET
2. ESTIMATED QUANTITIES, STANDARD PLATES AND NOTES
3. TYPICAL SECTIONS
4. INTERMITTENT RUMBLE STRIP DETAIL

THIS PLAN CONTAINS 4 SHEETS

DESIGN ENGINEER: I HEREBY CERTIFY THAT THIS PLAN WAS PREPARED BY ME OR UNDER MY DIRECT SUPERVISION, AND THAT I AM A DULY LICENSED PROFESSIONAL ENGINEER UNDER THE LAWS OF THE STATE OF MINNESOTA.

SIGNATURE *Jess Greenwood*
JESS GREENWOOD - GOODHUE COUNTY DESIGN ENGINEER

DATE 26 OCT. 2021 LIC. NO. 49150

Nancy Isakson 26 OCT 21
APPROVED GOODHUE COUNTY ENGINEER DATE

DISTRICT STATE AID ENGINEER: REVIEWED FOR COMPLIANCE WITH STATE-AID RULES/POLICIES DATE

STATE AID ENGINEER: APPROVED FOR STATE AID AND FEDERAL AID FUNDING DATE

PLAN REVISIONS		
DATE	SHEET NO.	APPROVED BY

I HEREBY CERTIFY THAT THE FINAL FIELD REVISIONS, IF ANY, OF THIS PLAN WERE MADE BY ME OR UNDER MY DIRECT SUPERVISION AND THAT I AM A DULY LICENSED PROFESSIONAL ENGINEER UNDER THE LAWS OF THE STATE OF MINNESOTA.

DATE LIC. NO.

S.A.P. NUMBER 025-629-002 (C.S.A.H. 29)

SHEET NO. 1 OF 4 SHEETS

LEGEND

ROAD AND ROADWAY FEATURES

- PROJECTED ROAD
- PRIMITIVE ROAD
- UNIMPROVED ROAD
- GRADED AND DRAINED ROAD
- SOIL SURFACE ROAD
- GRAVEL OR STONE ROAD
- BITUMINOUS ROAD
- PAVED ROAD
- DIVIDED ROAD

ROAD SYSTEM DESIGNATIONS

- INTERSTATE TRUNK HIGHWAY
- U.S. NUMBERED TRUNK HIGHWAY
- STATE NUMBERED TRUNK HIGHWAY
- COUNTY STATE AID HIGHWAY
- COUNTY ROAD
- COUNTY STATE AID IN ADJOINING COUNTY
- TERMINATION OF DESIGNATED ROUTE
- INTERSTATE EXIT
- GREAT RIVER ROAD
- FEDERAL AID INTERSTATE SYSTEM
- NATIONAL FOREST HIGHWAY
- NATIONAL FOREST DEVELOPMENT
- INDIAN SERVICE ROAD
- STATE FOREST ROAD
- STATE PARK ROAD

STRUCTURES

- General Symbols (over 20' span)
- HIGHWAY BRIDGE
- SMALL BRIDGES CLOSELY SPACED
- DRAWBRIDGE

DRAINAGE

- INTERMITTENT STREAM
- NARROW STREAM
- WIDE STREAMS
- MARSH OR SWAMP LAND
- DRAINAGE DITCH
- LAKE OR POND

BOUNDARIES

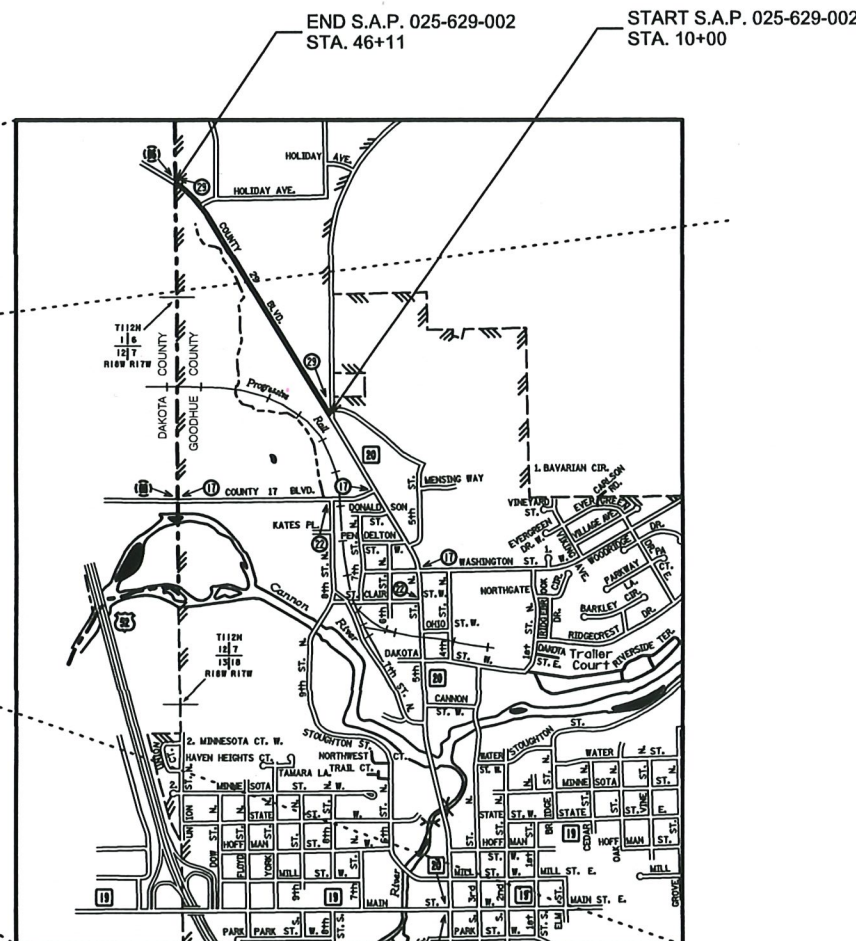
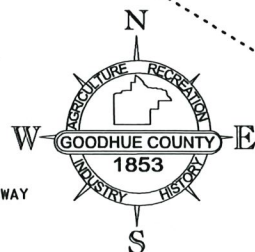
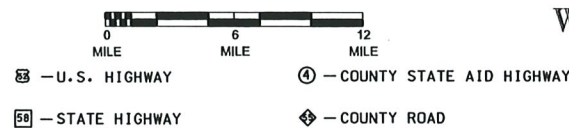
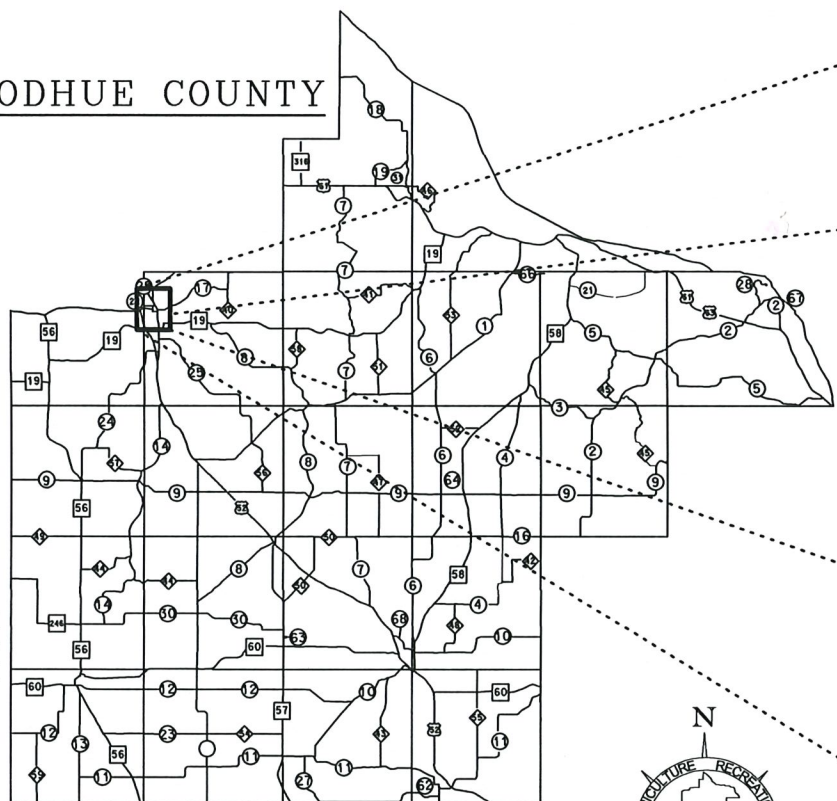
- NATIONAL OR STATE COUNTY
- CIVIL TOWNSHIP
- CONGRESSIONAL TOWNSHIP (U.S. LAND)
- CORPORATE LINE
- SECTION LINE
- CONGESTED AREA
- NATIONAL OR STATE PARK
- NATIONAL OR STATE FOREST
- INDIAN RESERVATION
- GAME REFUGE
- AIRPORT
- WILDLIFE MANAGEMENT AREA (STATE) OR WATERFOWL AREA (FEDERAL)
- MATCH LINE BETWEEN ADJOINING SHEETS OF THE SAME COUNTY

UTILITY

- UNDERGROUND CABLE PEDESTAL
- BURIED ELECTRIC CABLE
- BURIED TELEPHONE CABLE
- BURIED FIBER OPTIC CABLE
- GAS LINE
- WATER LINE
- VALVE
- FIRE HYDRANT
- MANHOLE

FOR MORE PLANS AND UTILITIES SYMBOLS SEE TECHNICAL MANUAL

GOODHUE COUNTY



DESIGN DESIGNATION

FUNCTIONAL CLASS	MINOR ARTERIAL
SHOULDER WIDTH	6'
R-VALUE	50
ADT (CURRENT YEAR)	2022 = 2695
ADT (FUTURE YEAR)	2042 = 3019
D (DIRECTIONAL DISTR.)	50/50 %
T (HEAVY COMMERCIAL)	4 %
TON DESIGN	10
N18 337536 (20 YEAR FLEXIBLE DESIGN)	

FOR PLANS AND UTILITIES SYMBOLS SEE TECHNICAL MANUAL

STATE PROJ. NO. CHARGE IDENTIFIER

PROJECT LOCATION SCALES

COUNTY : GOODHUE PLAN 100'
DISTRICT : 6 PROFILE 100' HORIZ. 10' VERT.

PATH & FILENAME: P:\102.ROADS\29CSAH\629-002 2022paving\cover_title29.dgn MODEL sheet for pdf PLOTTED/REVISED: 19-OCT-2021 11:43

PATH & FILENAME: P:\CO_ROADS\29CSAH\629-002_2022paving\EstQuant.typ.dgn MODEL EST_QUANT PLOTTED/REVISED: 27-OCT-2021 07:44

ESTIMATED QUANTITIES

NOTES	ITEM NO.	ITEM	UNIT	TOTAL QUANTITY
	2021.501	MOBILIZATION	LS	1
1	2221.509	AGGREGATE SHOULDERING	TON	640
	2232.504	MILL BITUMINOUS SURFACE 2"(P)	SY	10438
2	2232.603	MILLED RUMBLE STRIPS - INTERMITTENT	LF	5886
	2357.506	BITUMINOUS MATERIAL FOR TACK COAT	GAL	835
3	2360.509	TYPE SP 12.5 WEARING COURSE MIXTURE (3,C)	TON	1200
	2360.601	BITUMINOUS PAVEMENT DENSITY INCENTIVE	EACH	3245
	2563.601	TRAFFIC CONTROL	LS	1
4	2582.503	4" SOLID LINE PAINT	LF	5764
4	2582.503	6" SOLID LINE PAINT	LF	7392

NOTES:

1. THIS QUANTITY ASSUMES EXISTING SHOULDERS ARE 2" LOW PRIOR TO THIS PROPOSED CONSTRUCTION. THIS QUANTITY INCLUDES 175 TONS TO BE PLACED IN APPROACHES IN CONJUNCTION WITH MAINLINE PAVING OR AT THE DISCRETION OF THE ENGINEER IN THE FIELD. THE SPECIAL PROVISIONS AFFORD THE CONTRACTOR THE OPTION OF PROVIDING EITHER CLASS 1 OR CLASS 5 AGGREGATE SHOULDERING MATERIAL. SEE SPECIAL PROVISIONS FOR DETAILS.
2. INCLUDES FOG SEALING ON MILLED RUMBLE STRIPS. SEE DETAIL ON SHEET 4 FOR MORE INFORMATION.
3. THIS QUANTITY INCLUDES 67 TONS FOR APPROACHES TO BE PLACED IN CONJUNCTION WITH MAINLINE PAVING.
4. 4" SOLID LINE = YELLOW, 6" SOLID LINE = WHITE (SHALL BE PLACED AT 12' FROM CENTER)

STANDARD PLATES

THE FOLLOWING STANDARD PLATES, APPROVED BY THE FEDERAL HIGHWAY ADMINISTRATION, SHALL APPLY

PLATE NO.	DESCRIPTION
8000K	CHANNELIZERS
9000D	APPROACHES AND ENTRANCES

BASIS FOR ESTIMATED QUANTITIES:

WEARING COURSE MIXTURE	115 LB / SQ.YD. / IN
BITUMINOUS MATERIAL FOR TACK COAT	.08 GAL / SQ. YD.

UTILITY INFORMATION

THE SUBSURFACE UTILITY INFORMATION IN THIS PLAN IS UTILITY QUALITY LEVEL D. THIS QUALITY LEVEL WAS DETERMINED ACCORDING TO THE GUIDELINES OF C/ASCE 38-2, ENTITLED "STANDARD GUIDELINES FOR THE COLLECTION AND DEPICTION OF EXISTING SUBSURFACE UTILITY DATA".

I HEREBY CERTIFY THAT THIS PLAN SHEET WAS PREPARED BY ME OR UNDER MY DIRECT SUPERVISION AND THAT I AM A DULY LICENSED PROFESSIONAL ENGINEER UNDER THE LAWS OF THE STATE OF MINNESOTA.

DATE 26 OCT. 2021 LIC. NO. 49150 ENGINEER

GOODHUE COUNTY
 DEPARTMENT OF PUBLIC WORKS

ESTIMATED QUANTITIES

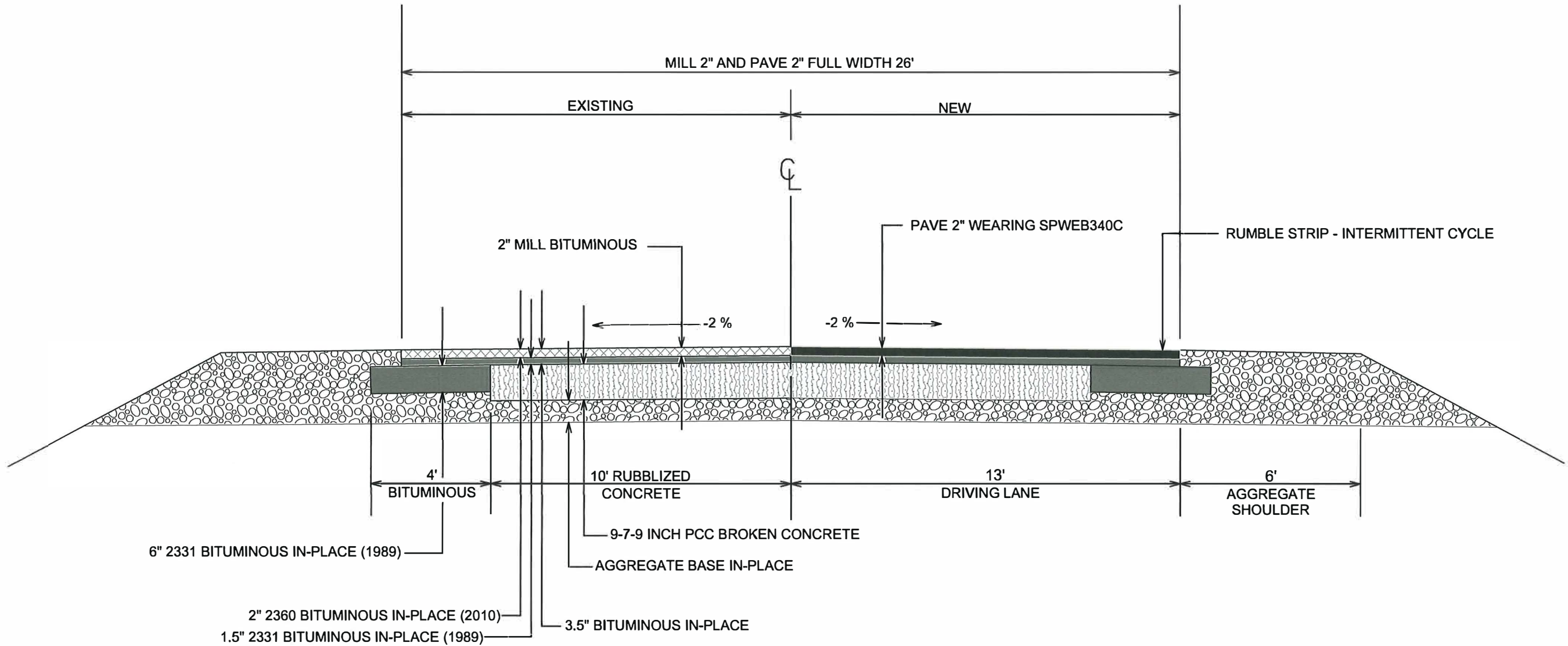
S.A.P. NUMBER 025-629-002 (C.S.A.H. 29)

SHEET NO. 2 OF 4 SHEETS

PATH & FILENAME: P:\CO.ROADS\29CSAH\629-002 2022paving\Typ Section29.dgn MODEL TYP29_SECTIONS PLOTTED/REVISED: 19-OCT-2021 11:43

Sta. 10+00 to Sta 46+11
 Proposed Gravel Equivalent = 21.0"
 According to MnDot Standards (2022)
 Required Gravel Equivalent = 21"
 Project year ADT = 2695
 20 Year Design Flexible ESAL = 337536

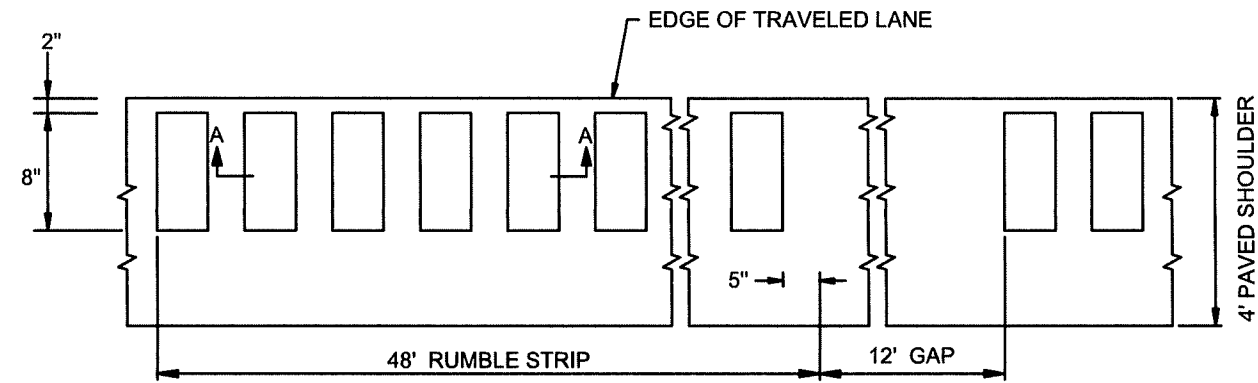
TYPICAL SECTION CSAH 29 Sta. 10+00.00 to Sta. 46+11.00
 BETWEEN T.H. 20 AND DAKOTA C.S.A.H. 86



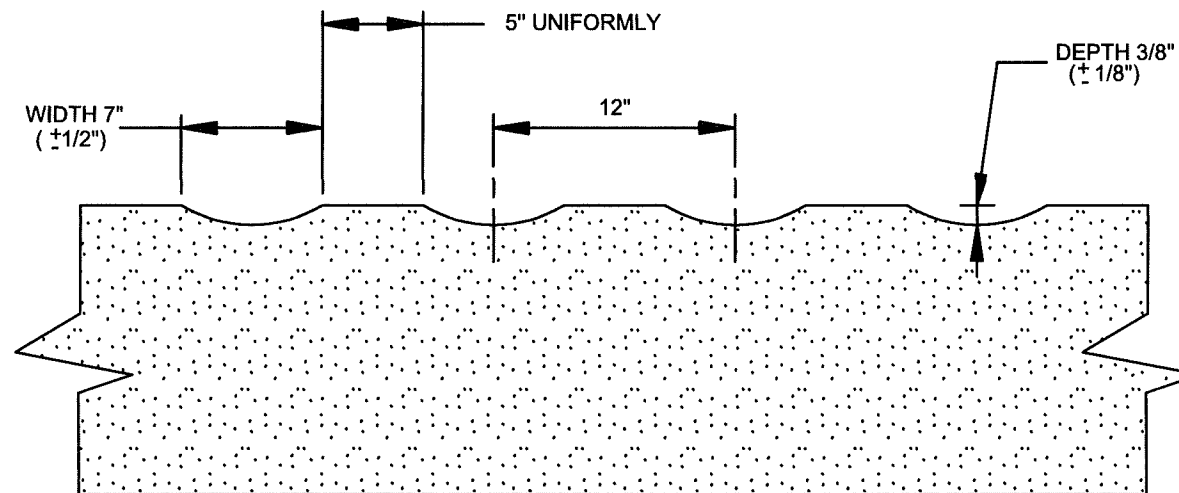
NO SCALE	I HEREBY CERTIFY THAT THIS PLAN SHEET WAS PREPARED BY ME OR UNDER MY DIRECT SUPERVISION AND THAT I AM A DULY LICENSED PROFESSIONAL ENGINEER UNDER THE LAWS OF THE STATE OF MINNESOTA.		GOODHUE COUNTY DEPARTMENT OF PUBLIC WORKS	TYPICAL SECTION	SHEET NO. 3 OF 4 SHEETS
	DATE 26 OCT. 2021	LIC. NO. 49150		ENGINEER <i>[Signature]</i>	

RUMBLE STRIP - INTERMITTENT CYCLE

PLAN VIEW



SECTION A-A



PATH & FILENAME: P:\CO.ROADS\29CSAH\629-002 2022paving\RumbleStr\p29.dgn MODEL RUMBLE STRIP

I HEREBY CERTIFY THAT THIS PLAN SHEET WAS PREPARED BY ME OR UNDER MY DIRECT SUPERVISION AND THAT I AM A DULY LICENSED PROFESSIONAL ENGINEER UNDER THE LAWS OF THE STATE OF MINNESOTA.

DATE 26 OCT. 2021 LIC. NO. 49150 ENGINEER [Signature]

GOODHUE COUNTY
DEPARTMENT OF PUBLIC WORKS

INTERMITTENT RUMBLE STRIP DETAIL

S.A.P. NUMBER 025-629-002 (C.S.A.H. 29) SHEET NO. 4 OF 4 SHEETS