

TO: Mayor and City Council

FROM: Dan Howard, Public Works Director

SUBJECT: Replacement of aluminum channel gates

MEETING DATE: Tuesday, December 7, 2021

BACKGROUND

The aluminum channel gates in the raw wastewater enclosure at the wastewater treatment plant have been in service since the construction of the plant in 2001. Due to corrosion and the acidic environment, the gates no longer operate freely and are in need of replacement.

Northwestern Power Equipment Company, Inc. has submitted a quote of \$16,400 for new stainless steel gates to replace the aluminum gates. Public Works staff will install the replacement channel gates.

REQUESTED COUNCIL ACTION

Motion and approval to accept the quote of \$16,400 from Northwestern Power Equipment Company, Inc. for the replacement channel gates at the wastewater treatment plant as recommended by the Public Works Commission.

Northwestern Power™ Equipment Co., Inc.

QUOTE

Company: City of Cannon Falls
 Contact: Wes Anway
 Project: WTP Gate
 Quote Number: 21550-A
 11.22.2021

Darin Kluck
 djkluck@nwpeco.com
 (c) 612.240.9105
 (o) 651.628.0683

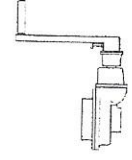
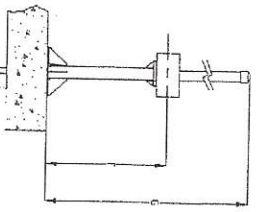
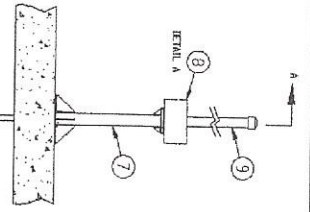
Item	Qty.	Unit	Description	Unit Price [\$]	Value [\$]
1	2		<p>G-1-4-1, 2 Fontaine-Aquanox Series 25 Channel Gate Model: 254-P2X-36x48-A-CW-4 Dimensions: 36in x 48in Design Pressure (On/Off): 4.0ft/0.0ft Installation depth: 16.50ft Open frame, Single Rising Stem Mounting: Face of Wall Material: 316L stainless steel Operator: Pedestal mounted gearbox and crank Anchors not-included (Dia.: 0.50in, Qty=34) Certification: AWWA C561-14</p> <p>NOTE: Note that gates, stop logs and stop plate frames cannot always be shipped 100% assembled and might require some field assembly. Stems need to be aligned, operators installed and long self contained gate frames (>10ft - 3m) assembled. This is part of gate installation and common to all manufacturers, per industry standards. Detailed instructions are available in our manuals available online.</p> <p>CONDITIONS: Lead Times: Submittal Drawings: 4-6 Weeks Gate(s) Shipment: 10-14 Weeks after approval</p> <p>Replacement of existing Fontaine aluminum channel gate 274-36x48-L-FE</p>	8,200	16,400
				TOTAL NET PRICE	\$16,400

Pricing Comments

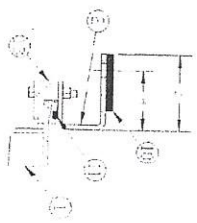
Taxes and freight not included
 Start-up not included, installation not included
 Quote valid for 60 days

Series 25 - Model 254-PX

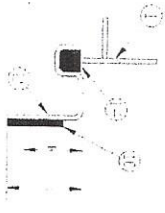
TYPICAL DRAWING
(DATA SHEET)



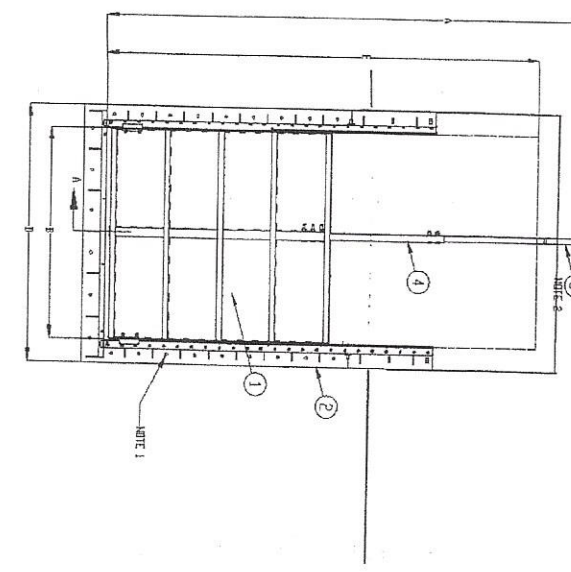
DETAIL A



SIDE SEAL
CROSS SECTION



BOTTOM SEAL
CROSS SECTION



SECTION A-A

- NOTE 1. ANCHOR BOLTS ARE NOT SUPPLIED. USE ANCHORS AS RECOMMENDED BELOW OR EQUAL
MECHANICAL: MULTI KWIK BOLT 3, 5/8" (16mm) DIA. X 4" (102mm) EMBEDMENT IN 4000 PSI (28 MPa) CONCRETE
ADHESIVE: HILTI HVA, 5/8" (16mm) DIA. X 5" (127mm) EMBEDMENT IN 4000 PSI (28 MPa) CONCRETE
- NOTE 2. STEM THREADS ARE ROLLED ACME TYPE THREADS, LEFT HAND, DOUBLE ENTRY
- NOTE 3. STEM GUIDES QUANTITY AND POSITION TO BE CONFIRMED AT GATE DESIGN

TABLE OF DIMENSIONS (in / mm)

NOMINAL DIMENSIONS	A	B	C	D	E	F	G	H	J
36 X 48	198 / 5029	36 / 914	48 / 1219	44 / 1118	98.63 / 2505	36 / 914	91 / 2311	3.13 / 79	4 / 102

DESIGN HEAD	WEIGHT
(ft / m)	(lbs / kg)
4 / 1.2	235 / 106

Fontaine AQUAROCK

DO NOT USE FOR CONSTRUCTION

Series 20 Side Gates
Open Frame
Well Mounted
Rising Stem

ISE Metal Inc. - Sherbrooke, QC, Canada
www.iseaquarock.com - 819-769-0157

REV.: 0
DATE: 2015-12-02

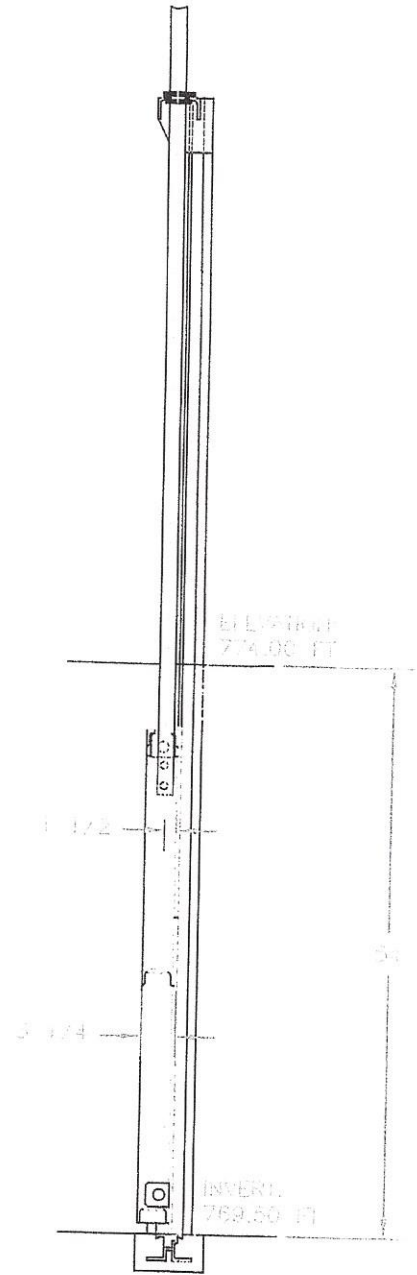
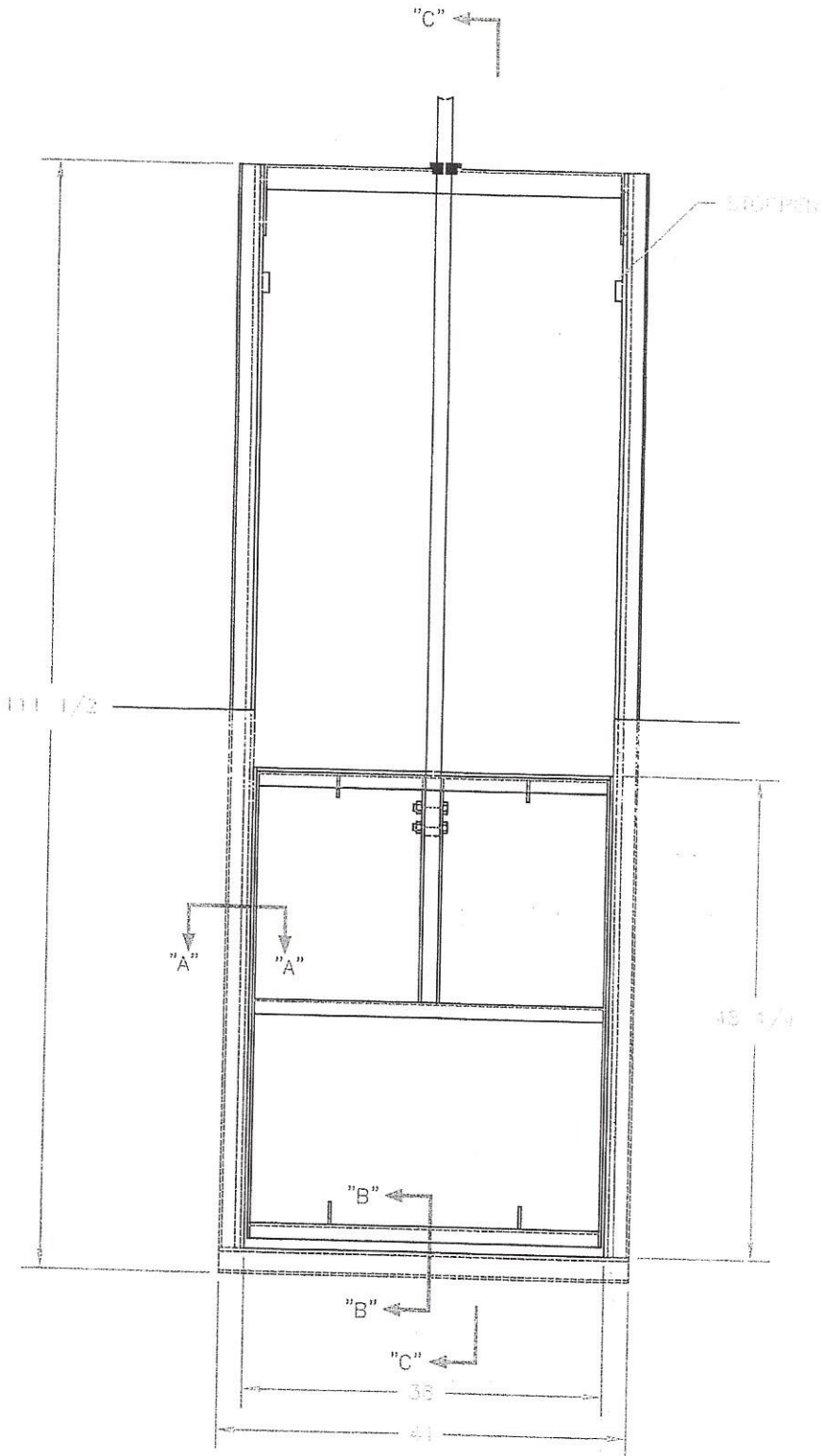
DRAWING NO.: DTP-254-PX-CW-CAD-250RF

Description	Material
1 Side Assembly	316L Stainless Steel
2 Frame Assembly	316L Stainless Steel
3 Treated Stem	316 Stainless Steel
4 Stem Extension	316 Stainless Steel
5 Stem Guide Bracket	316L Stainless Steel
6 Stem Guide Bushing	UHMWPE
7 Pedestal	316L Stainless Steel
8 Actuator (See detail A)	
9 Graduated Stem Protector	Clear PVC
10 Wall Gasket	EPDM
11 Compression Cord	EPDM
12 Top Seal	UHMWPE
13 Side Seal & Guide	UHMWPE
14 Bottom Seal	EPDM

274-36x48-L-FE
ALUMINUM

2

G-1-4-1
G-1-4-2



SECTION "C-C"

NOTE: ALUMINUM TO BE IN CONTACT WITH CONCRETE WILL FIRST BE COATED WITH A HEAVY COAT OF (INTERTUF 708-HS BLACK) HIGH BUILD COAL TAR EPOXY.

REVISION: A DATE: 2002/01/22

111 F012108-111

273 .36 48 FE MNEP A I JFP