

**TO: HONORABLE MAYOR & CITY COUNCIL OF CANNON FALLS**

**FROM: Laura Qualey, Community & Economic Development Associate (CEDA)**

**SUBJECT: Approve Submission of the Taylor Rural Improvements Grant Application**

**MEETING DATE: August 6, 2024**

**BACKGROUND**

Southern Minnesota Initiative Foundation (SMIF) has just announced the Taylor Rural Improvements Grant seeks to support capital projects that can make a big impact in the vibrancy of small towns. SMIF is offering up to \$25,000 for projects in communities located in our 20-county region with populations under 10,000, more specifically, they are limiting it to CEDA contracted communities such as Cannon Falls. They are allocating \$150,000 to this grant opportunity in 2024.

Examples of projects include, but are not limited to: public playground equipment, park shelters, seating, or similar in community spaces, and projects must be completed by December 31, 2025.

With the current development of the Timber Ridge housing development, I would like to ask the Park & Public Works Commission for support to apply to the Taylor Rural Improvement Grant for \$25,000 to purchase new playground equipment and an in-kind match of \$6,250 from the Public Works Department for labor to prepare the site and install the new equipment if successfully awarded the funding.

Timber Ridge has dedicated 2.7 acres to an active park in the development (see attached exhibit) and this grant could assist in kicking off the park with a few playground amenities on about .5 acres. This would allow for further planning of the park, but would begin the process to establish the park.

The grant application is due August 29<sup>th</sup> and awards will be announced by September 30<sup>th</sup>, 2024 and funds must be spent by September 30, 2025 and completed by December 31, 2025 which gives time to get equipment ordered, the site prepared and equipment installed before the end of the grant report is due.

This was presented to the Public Works & Park Board on Thursday, August 1, 2024 and the Commission unanimously supported the proposal and recommendation for submitting the application for the grant.

**REQUESTED COUNCIL ACTION**

Staff is seeking a motion for approval to apply for SMIF's Taylor Rural Improvement Grant to establish and begin creating a new park in the Timber Ridge housing development and utilize a 25% in-kind match for labor from the Public Works Department.

**Southern Minnesota Initiative Foundation**  
**Taylor Rural Improvements Grant**  
**Guidelines and Procedures**

*Effective August 2024*

Southern Minnesota Initiative Foundation (SMIF) works collaboratively to help create vibrant communities, innovative and successful economies and engaged and valued citizens. A key component to creating a vibrant region is to ensure all its communities are strong and successful.

The Taylor Rural Improvements Grant seeks to support capital projects that can make a big impact in the vibrancy of small towns. SMIF offers up to \$25,000 for projects in communities located in our 20-county region with populations under 10,000. Projects must be completed by December 31, 2025.

Examples of projects include, but are not limited to: public playground equipment, park shelters, ADA compliance ramps, seating, or similar in community spaces, refrigerator/freezer or loading dock for food shelf, or new computers for a public library.

Eligible organizations are units/agencies of government, IRS-designated 501(c)(3) nonprofit organizations (current status, not pending), and public institutions (public schools, public higher education, etc). Organizations which do not comply with the above status may seek a fiscal agent who holds one of the above legal statuses.

The Taylor Rural Improvements Grant is supported by a generous donation from Glen A. Taylor through the Taylor Family Farms Foundation. Taylor has a long history of funding philanthropic initiatives related to rural community revitalization. The gift will create a financial framework to support these and other causes for future generations in the area Glen Taylor still calls home.

**Exclusions:**

- Individuals, businesses, or other for-profit organizations
- Equipment for emergency services will not be covered by this grant. The Taylor Family Farms Foundation has a separate grant that supports emergency services.
- Individuals, businesses, or other for-profit organizations
- General operating expenses and expenses not directly related to the project
- Programs or services mandated by law
- Routine maintenance
- Campaigns or endowments

**Application requirements:**

- Only CEDA communities are eligible for this pilot program
- Completed application (online)
- 25% cash or in-kind match (For example, if applicant is seeking \$25,000, they must have \$6250 cash in-hand or in-kind before SMIF will release any awarded grant funds.)
- Grant dollars must be spent by September 30, 2025
- A final report is due within 30 days of final grant dollars expended

**2024 Taylor Rural Improvements Grant Timeline:**

August 1, 2024- Announcement

August 29, 2024- Applications Due

September 30, 2024- Award Date

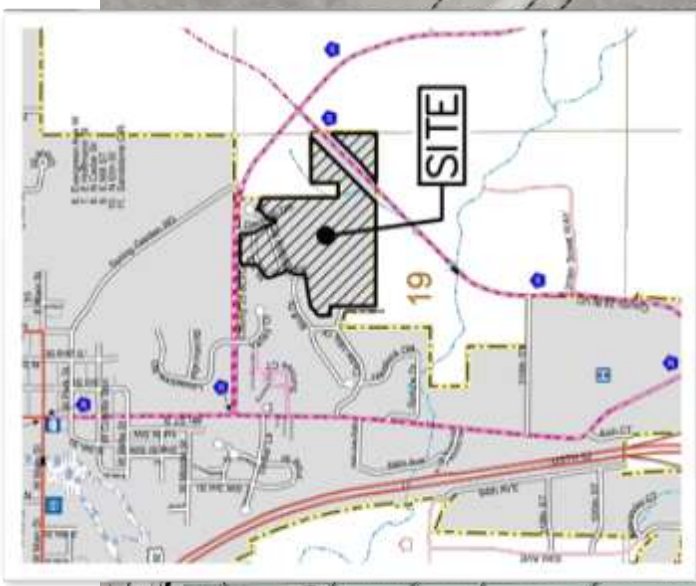
October 31, 2025- Final Report Due

**For questions contact:**

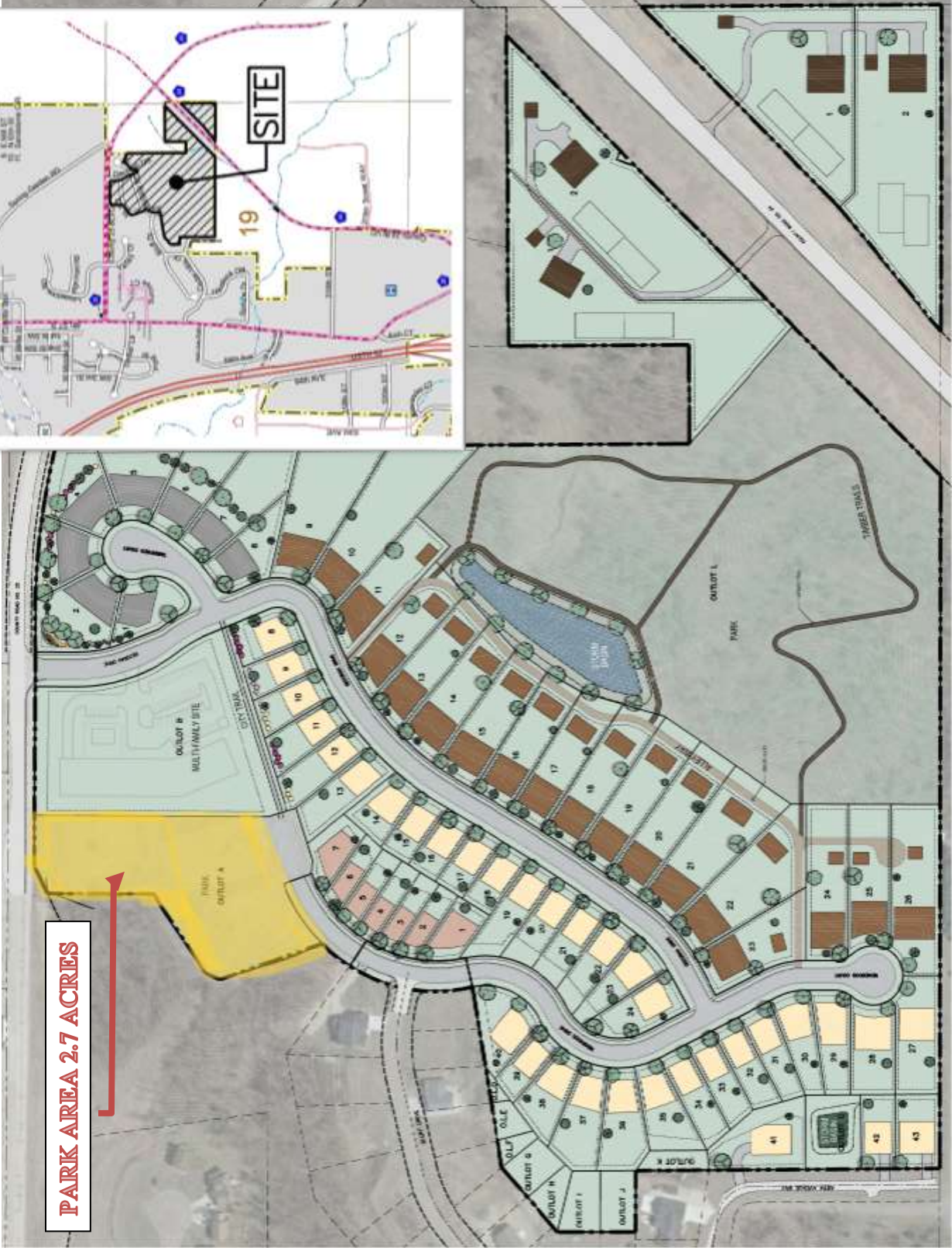
Sarah Scheffert, Community Vitality Specialist

507.214.7015

sarahs@smifoundation.org



**PARK AREA 2.7 ACRES**



**TIMBER RIDGE | CANNON FALLS, MN**